

## Ho Sung Lee

Associate Professor, Mechanical and Aeronautical Engineering

Specialty Area: Engine Cooling Systems and Wire Harnesses

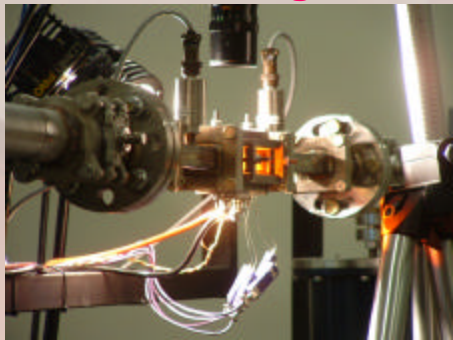
Degree: Ph.D., University of Michigan (1993)

Related Past Affiliation: DaimlerChrysler and Ford

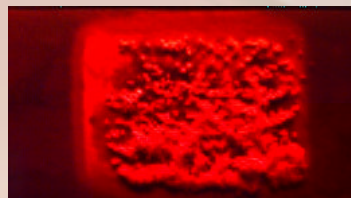
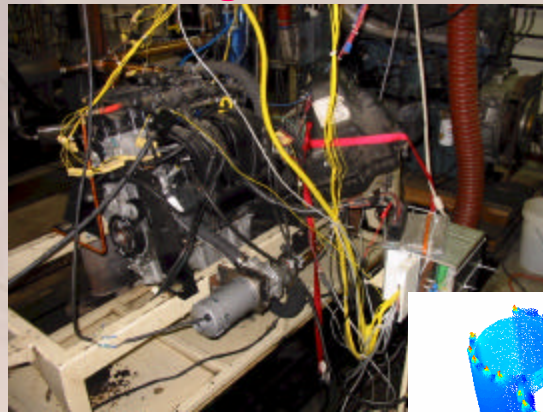
## Wire Harnesses

## Engine Cooling Systems

Test Rig

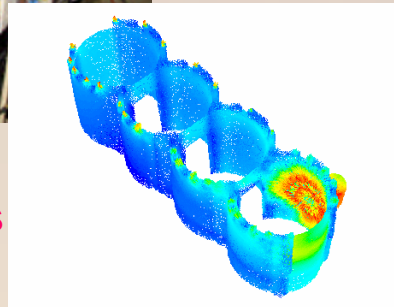


IC Engine



Boiling

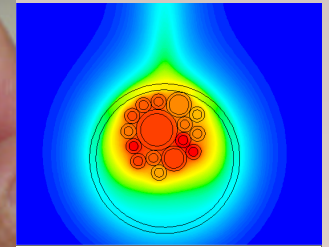
CFD Simulations



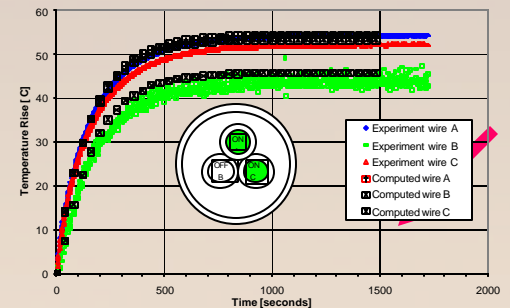
Thermal Behaviors



CFD Simulations



Contours of Static Temperature (K) May 26, 2000 FLUENT 5.3 (2d, segregated, lam)



Measurements