



First Steps in Developing Your Web Site

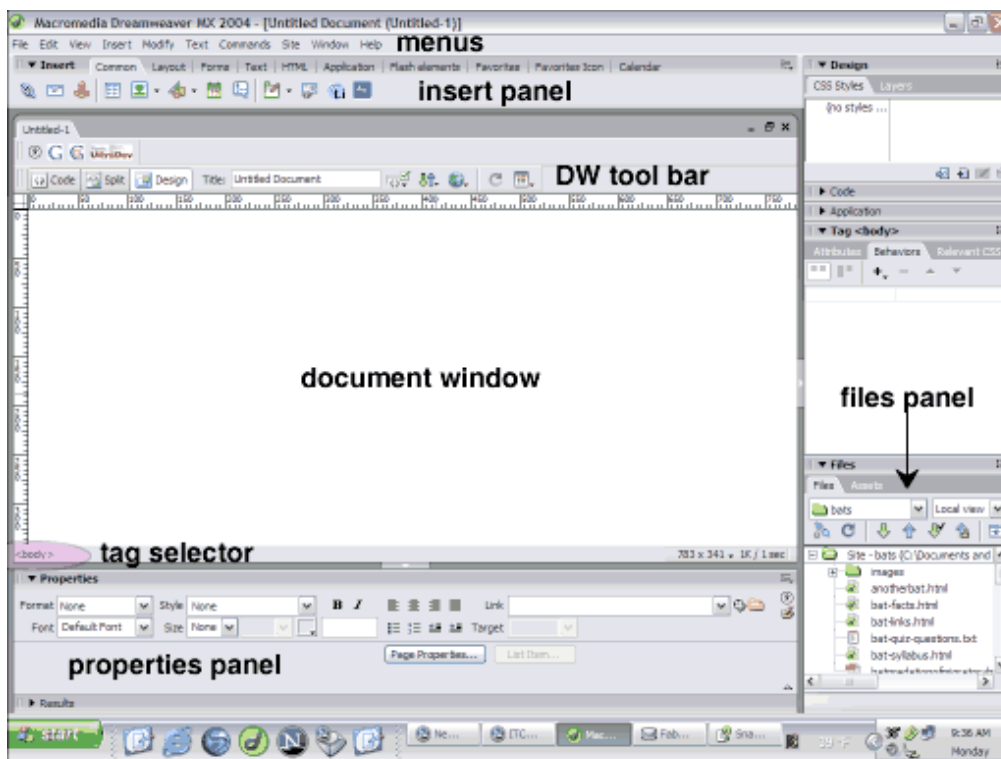
Dreamweaver Basics

- [Site Setup](#)
- [Personal Home Page](#)
- [Course Home Page](#)
- [Syllabus](#)
- [Comment Form](#)

Homepages Registration and Dreamweaver Site Setup

The objective of this part of this exercise is to set up your homepages account for web publishing and set up your site structure in Dreamweaver on your computer.

1. Setup web publishing on your Bronco account — you need to know your Bronco NetID and password. *This step is a one time procedure.*
2. Go to the web site <http://homepages.wmich.edu/fac-staff/>
3. Click on the hyperlink "Request web publishing access". Read the agreement and click the "I accept" button at the bottom of the page.
4. Type in your Bronco NetID and password when prompted.
5. On the next page, check the options that you want to turn on, then click the "Set Feature Selections" button at the bottom of the page. We recommend you list your address in the online directory.
6. In your My Documents folder or Mac OSX Home area, create a folder that will contain the materials that you want to publish on the web.
7. Start Dreamweaver (double click on the Dreamweaver icon) and review the DW layout. It is important that you become familiar with these panels and what they do.

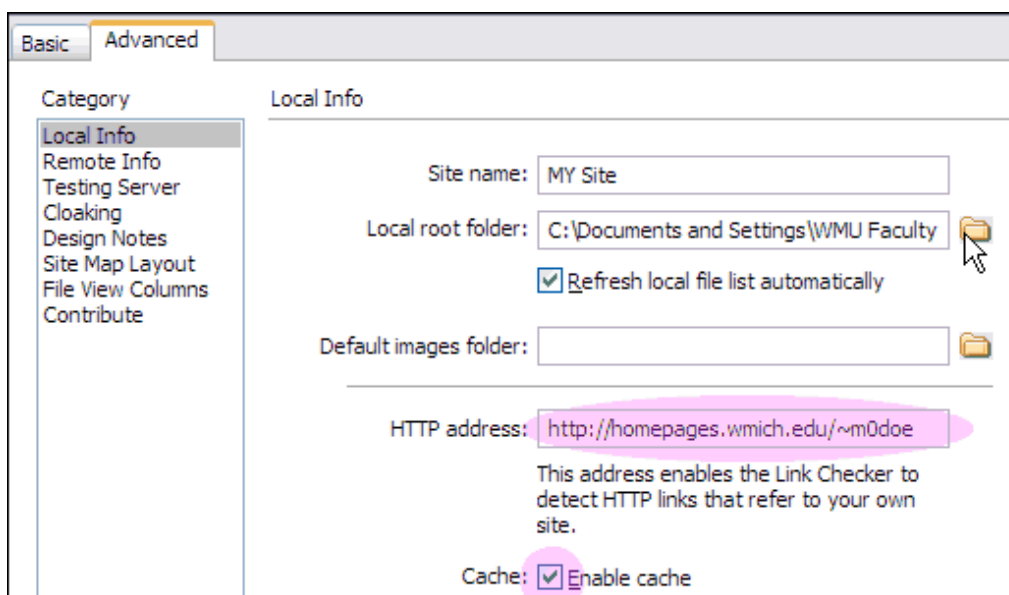


Dreamweaver Window

8. Change some DW preferences (to make life a little bit easier).
 - a. From the menu, select Edit>Preferences.
 - b. Click on the option "HTML rewriting".
 - c. Unclick the option "Encode special characters in URL's using % sign".
 - d. Click OK.
9. Turn on rulers: from the menu, select View>Rulers. Make sure that the rulers are measuring pixels, not inches.
10. Show <head> elements. From the DW toolbar click at the top of your document, click on right most icon, then select Head content (alternately, from the menu select View>Head Content).
11. Setup your site — you need to know your URL, the name of the web server you are going to publish to, your Bronco NetID and password.
 - a. Your URL is (write it in)

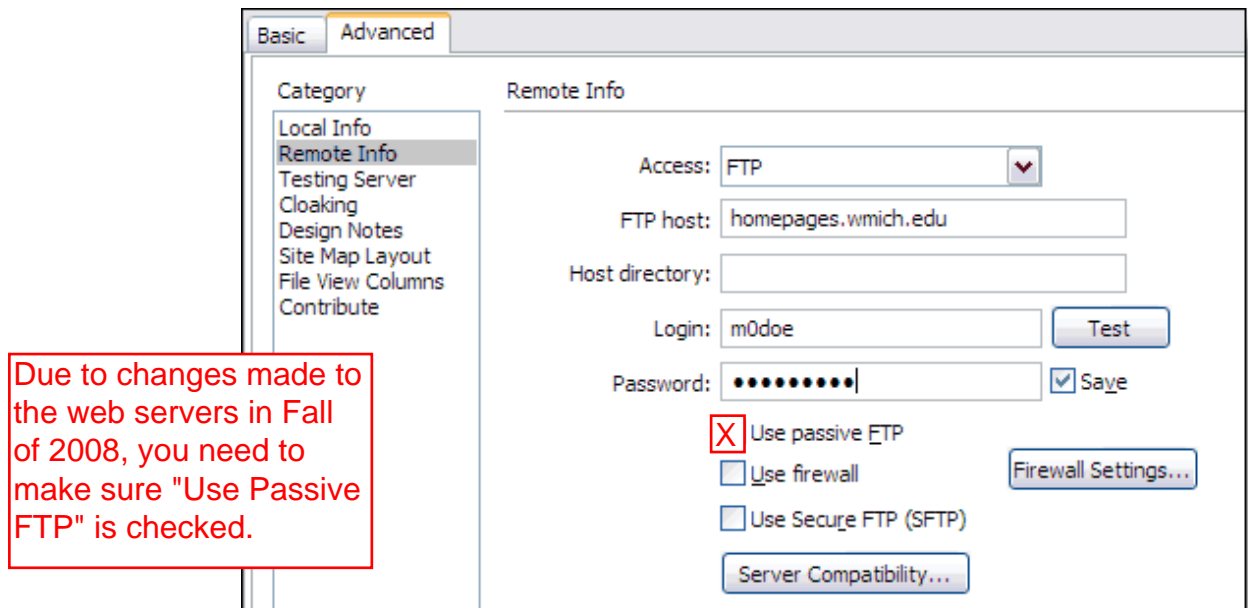
 - b. Leave the folder name blank
 - c. Your web server name is `homepages.wmich.edu`.
12. Click on Site>New Site. *Note: Avoid pressing the RETURN key in this window.*
13. Click on the Advanced tab. On the left-hand-side, click "Local Info".

To edit your site definition, click on Site>Manage Sites, then double-click on the site name you wish to edit



- a. In the "Site name" field, type in your name.
- b. Click on the folder icon at the right of the "Local root folder" field.
 - i. PC: browse to your My Documents folder, then to your www folder. Click the "Select" button.
 - ii. Mac: browse to your Documents folder, click once on the Web Pages folder and click the Choose button.

- c. In the "HTTP address" field, type in your URL.
 - d. Make sure the Cache box is checked
14. On the left-hand side, click on the "Remote Info" item to highlight it.



- a. On the right-hand side, In the "Access" field, next to the word "None", click on the small down arrow and select "FTP".
 - b. In the "FTP host" type: **homepages.wmich.edu**
 - c. Leave the Host directory field blank.
 - d. In the "Login" field, enter your Bronco NetID.
 - e. If you are in a workshop or working in the ITC, you may want to leave the password field blank.
 - f. Click OK.
15. When prompted, answer Yes to create a site cache!

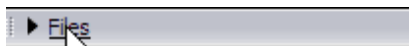
Create Your Site Structure

Your site structure is how you organize your files and folders for Web publishing. It is easy to work from the File panel to create new files and folders for your site. This way DW can update the site cache as you work. For security reasons, with the exception of images, every folder in your Web site should contain a "home page" named **index.html**.

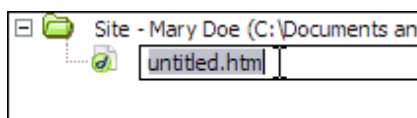
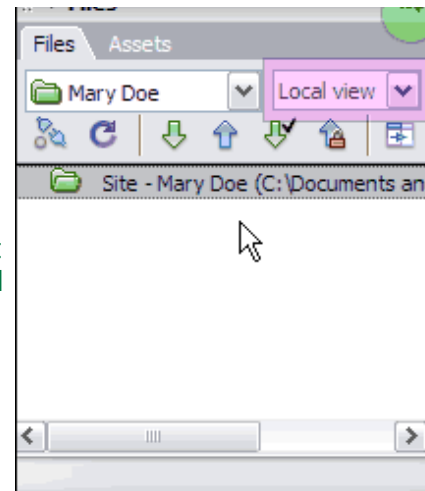
1. Create empty files that will contain your web documents.
2. *Avoid naming files or folders using spaces or special characters. For best results use lowercase letters, numbers, periods (.), and dashes (-) in names. Remember that the Web server you are publishing to is CaSe sensitive.*
3. Your files panel is located in the lower



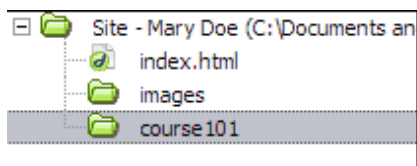
right corner of your window. If you don't see the files panel, from the menu click on Window>Files. If the Files panel is closed, click on the word files to open it.



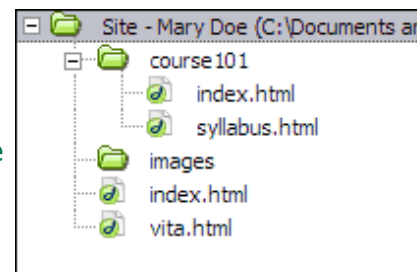
4. Make sure the drop down list on the right (magenta square at right) is set to "Local view". This lists files in your Web folder on your own computer.)
5. Click on your site folder to highlight it.
6. Add an empty file that will contain your home page. Click on the File panel menu icon (green circle at above right). Click on File, then New File (Windows users can right-click on the Site folder, then select New File). Replace untitled.html with **index.html**.



7. Repeat steps 5 and 6. Replace untitled.html with **vita.html**.
8. Add folders that will contain images and course materials. To add a folder, click the File panel menu, then File, then New Folder. Name the folder images.
9. Repeat, naming the second folder for a course you are teaching.
10. Add a file placeholder for the homepage for your course. Select your course folder by clicking on it once.



11. Add an empty container file that will contain your course home page. Click on the File panel menu icon (green circle at above right). Click on File, then New File (Windows users can right-click on the Site folder, then select New File). Replace untitled.html with **index.html**.
12. Repeat steps 10 and 11. Replace untitled.html with **syllabus.html**.
13. Repeat steps 9 and 10 for other course materials that will be added later (for example: resources.html, grades.html, etc).



< [prev](#) [top](#) [next](#) >

Contact: [Julie Scott](#)

Last revised: October 18, 2004

<http://www.wmich.edu/itc/tutorials/dreamweaver/beginning/sitesetup.html>

Instructional Technology Center
269-387-6958

part of
Office of Information Technology
Western Michigan University