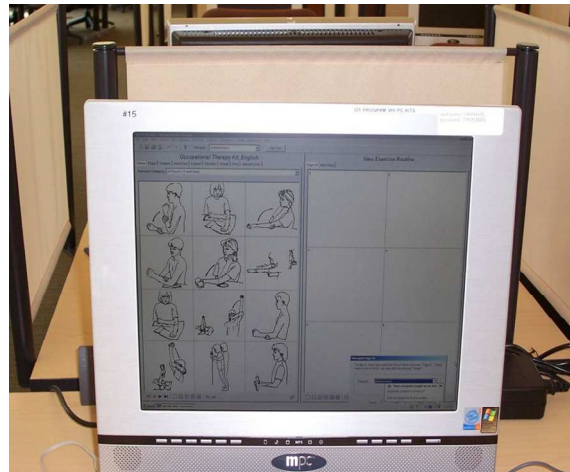


NEW ADDITIONS TO THE CHHS LEARNING RESOURCE CENTER

FALL SEMESTER 2008



We have relocated computers into the individual study rooms and they now include SmartNav and Dragon Naturally Speaking programs.

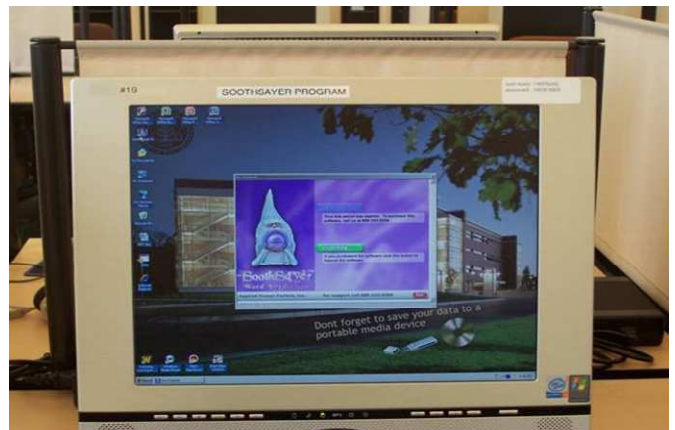


We have added special computer programs including PC-Kits (above)...

...And Soothsayer Word Prediction Program (below)



Video Cameras are now available for faculty, staff, and student use. Special permission is required to remove them from the LRC.





Students can now print to this laser printer using their computer lab fees by logging on computers with their Bronco Net ID in the LRC.



Faculty, staff, and students can send and receive faxes in the LRC. The fax number is (269) 387-8129. Long distance faxes require use of your personal phone card.



The Equitrac Machine has been relocated to the LRC for your convenience to purchase copy cards and add funds to the cards.



As a joint project with the College of Health and Human Services and Waldo Library, we have added a drop box outside our door. Here items belonging to Waldo Library and its branches are picked by staff from Waldo Library daily Monday through Friday.