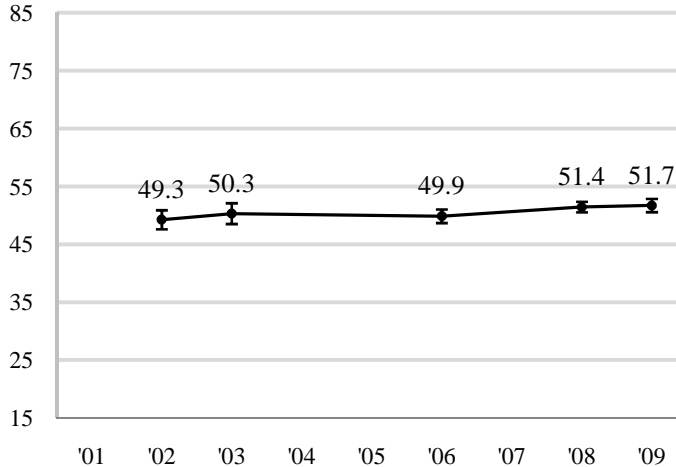
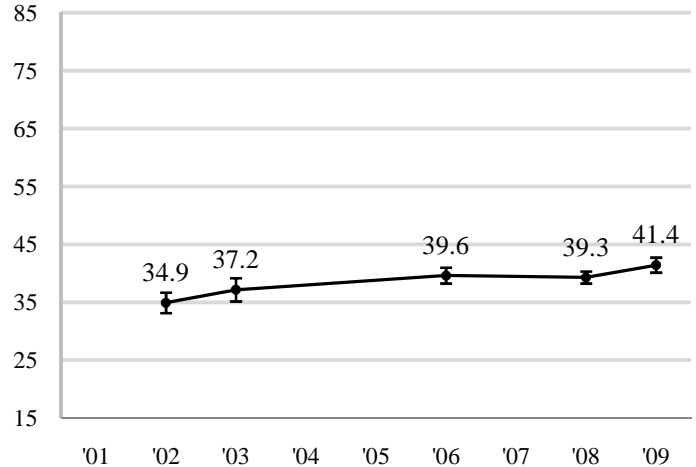


**First-Year Students**

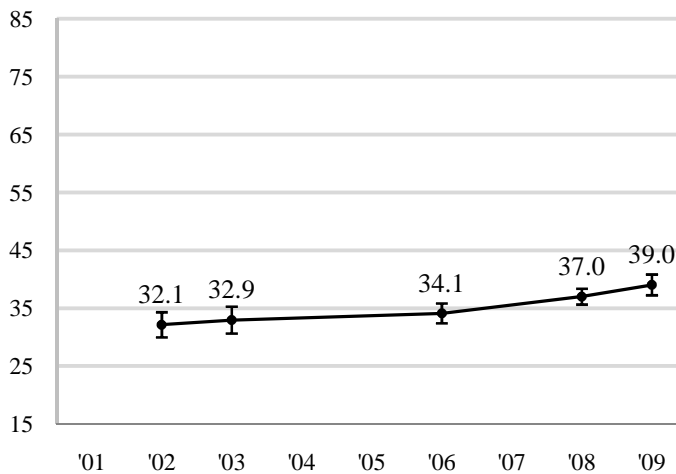
**Level of Academic Challenge (LAC)**



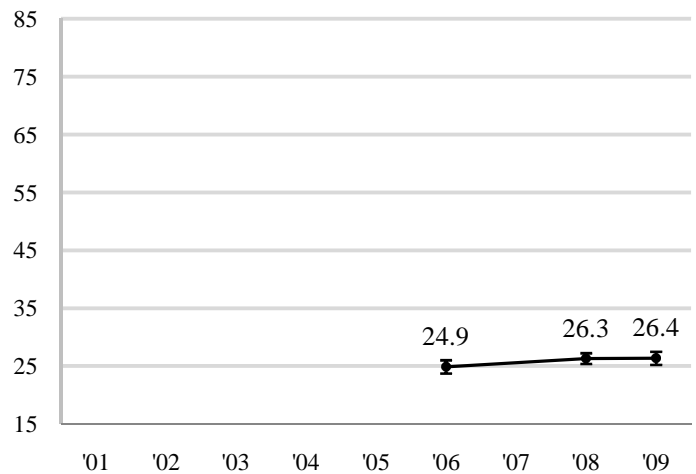
**Active and Collaborative Learning (ACL)**



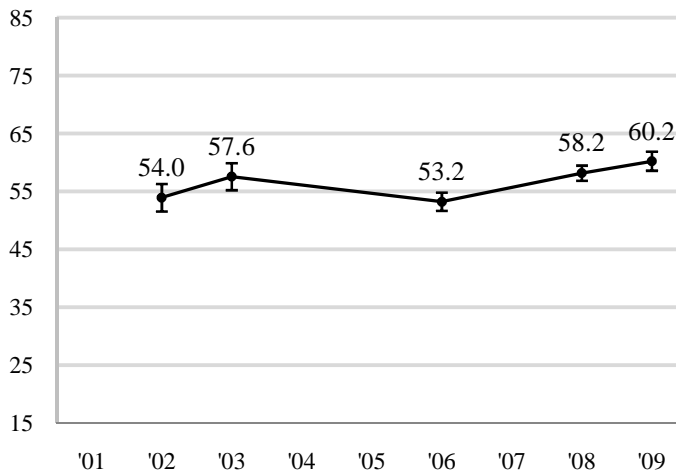
**Student-Faculty Interaction (SFC)<sup>b</sup>**



**Enriching Educational Experiences (EEE)<sup>c</sup>**



**Supportive Campus Environment (SCE)**

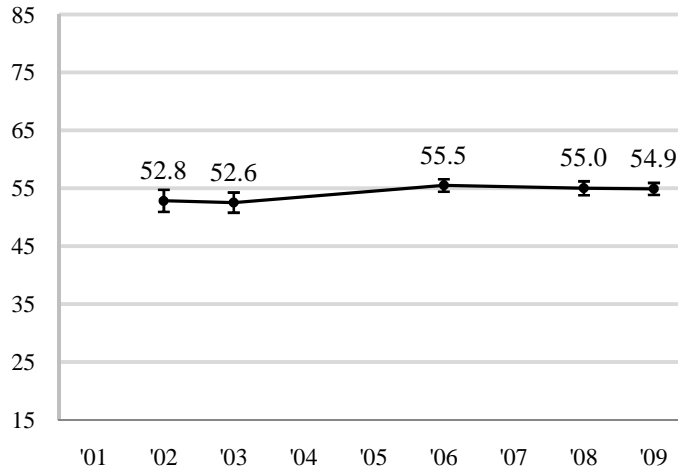


**Notes:**

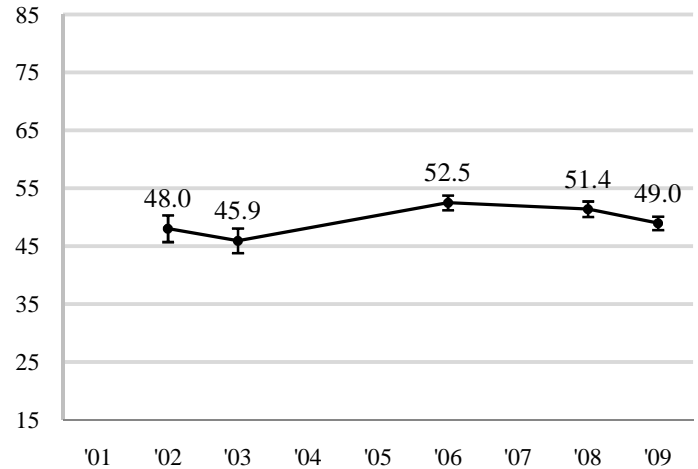
- a. Recalculated benchmark scores are charted for all years of participation since 2001. See page 5 for detailed statistics. For more information and recommendations for analyzing multi-year NSSE data, consult the *Multi-Year Data Analysis Guide*: [www.nsse.iub.edu/pdf/NSSE\\_Multi-Year\\_Data\\_Analysis\\_Guide.pdf](http://www.nsse.iub.edu/pdf/NSSE_Multi-Year_Data_Analysis_Guide.pdf).
- b. For institutions with 2001-2003 data, due to a change to the 'research with faculty' item in 2004, 'SFC' (a version of 'SFI' that does not include that item) is charted on this page. Statistics for both versions are provided on page 5.
- c. 2001-2003 'EEE' scores are not provided because these scores are not comparable with those of later years; response options for several 'EEE' items were altered in 2004.

**Seniors**

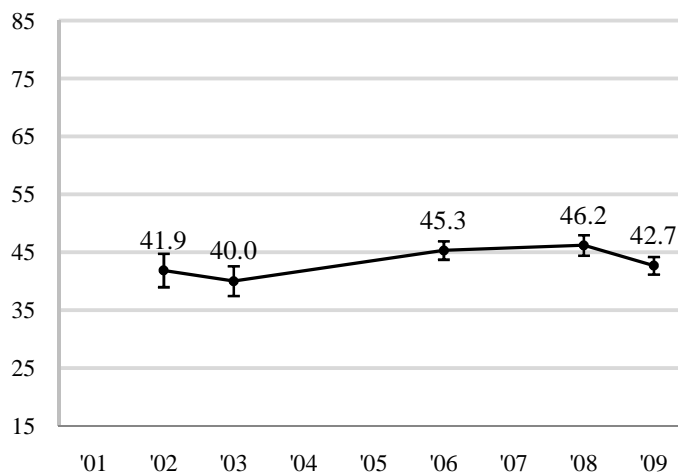
**Level of Academic Challenge (LAC)**



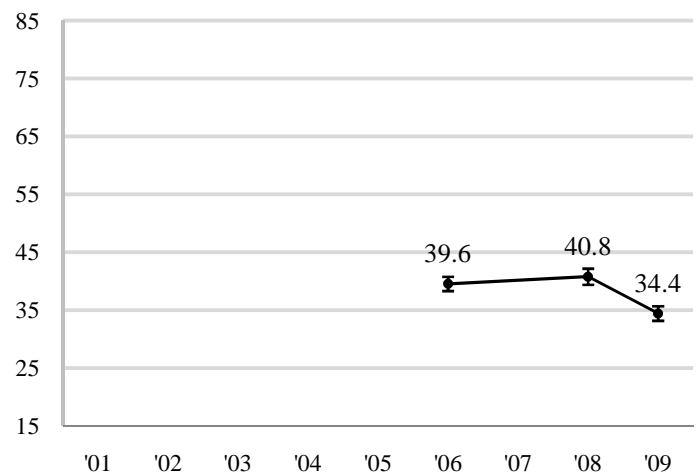
**Active and Collaborative Learning (ACL)**



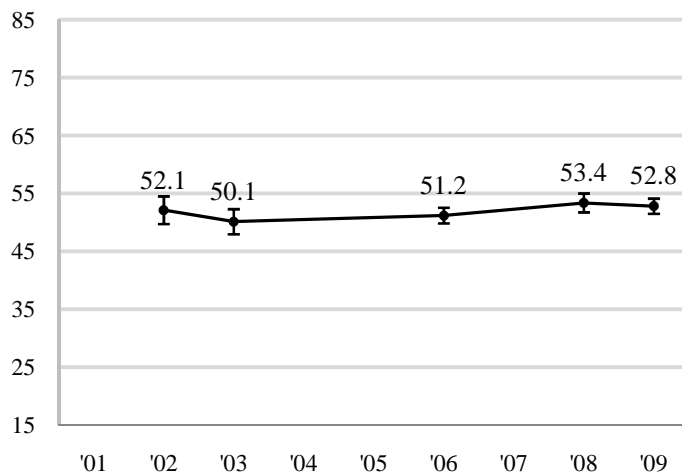
**Student-Faculty Interaction (SFC)<sup>b</sup>**



**Enriching Educational Experiences (EEE)<sup>c</sup>**



**Supportive Campus Environment (SCE)**



**Notes:**

- a. Recalculated benchmark scores are charted for all years of participation since 2001. See page 7 for detailed statistics. For more information and recommendations for analyzing multi-year NSSE data, consult the *Multi-Year Data Analysis Guide*: [www.nsse.iub.edu/pdf/NSSE\\_Multi-Year\\_Data\\_Analysis\\_Guide.pdf](http://www.nsse.iub.edu/pdf/NSSE_Multi-Year_Data_Analysis_Guide.pdf).
- b. For institutions with 2001-2003 data, due to a change to the 'research with faculty' item in 2004, 'SFC' (a version of 'SFI' that does not include that item) is charted on this page. Statistics for both versions are provided on page 7.
- c. 2001-2003 'EEE' scores are not provided because these scores are not comparable with those of later years; response options for several 'EEE' items were altered in 2004.