

Create a new folder, namely 'Wcup330' on your local Drive C by completing the following steps.

Click "My Computer" icon on the upper right corner of your screen.

Then click "Drive C"

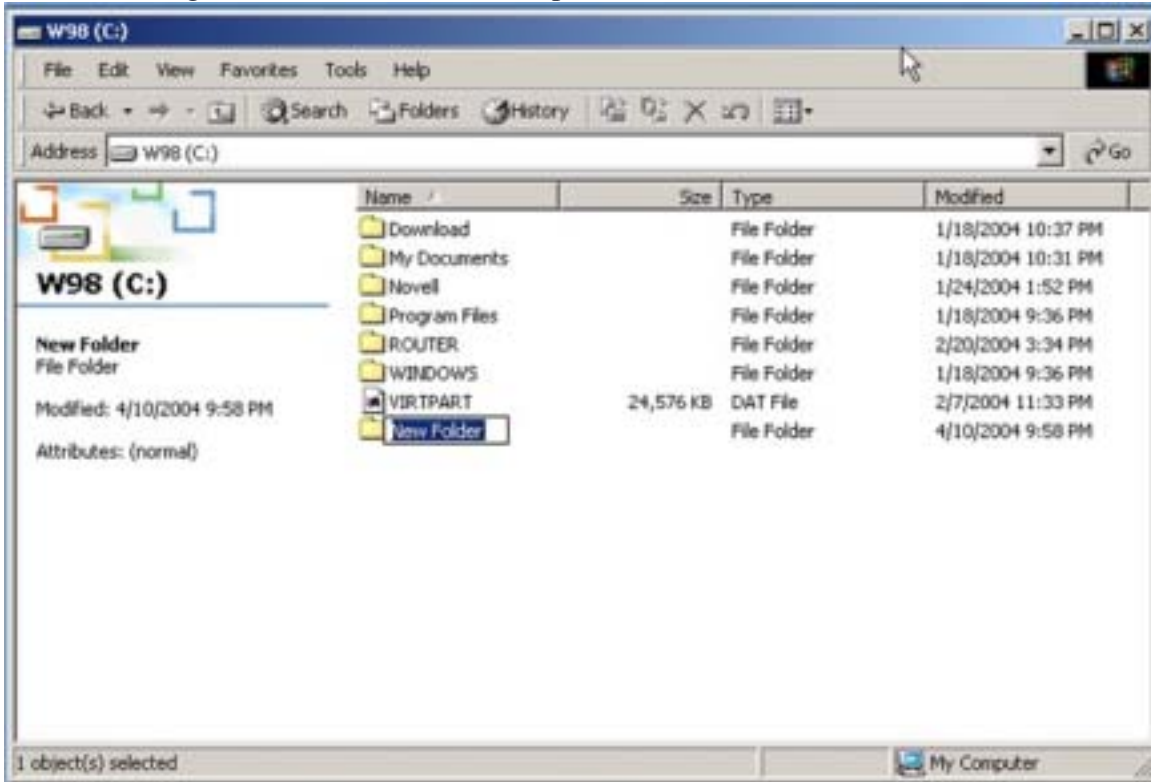
Click "File"

Click "Folder"



(See next page)

A “New Folder” appears on your screen and, while it is highlighted, type ‘Wcpu330’. This will change the “New Folder” to “Wcpu330”.



(see next page)

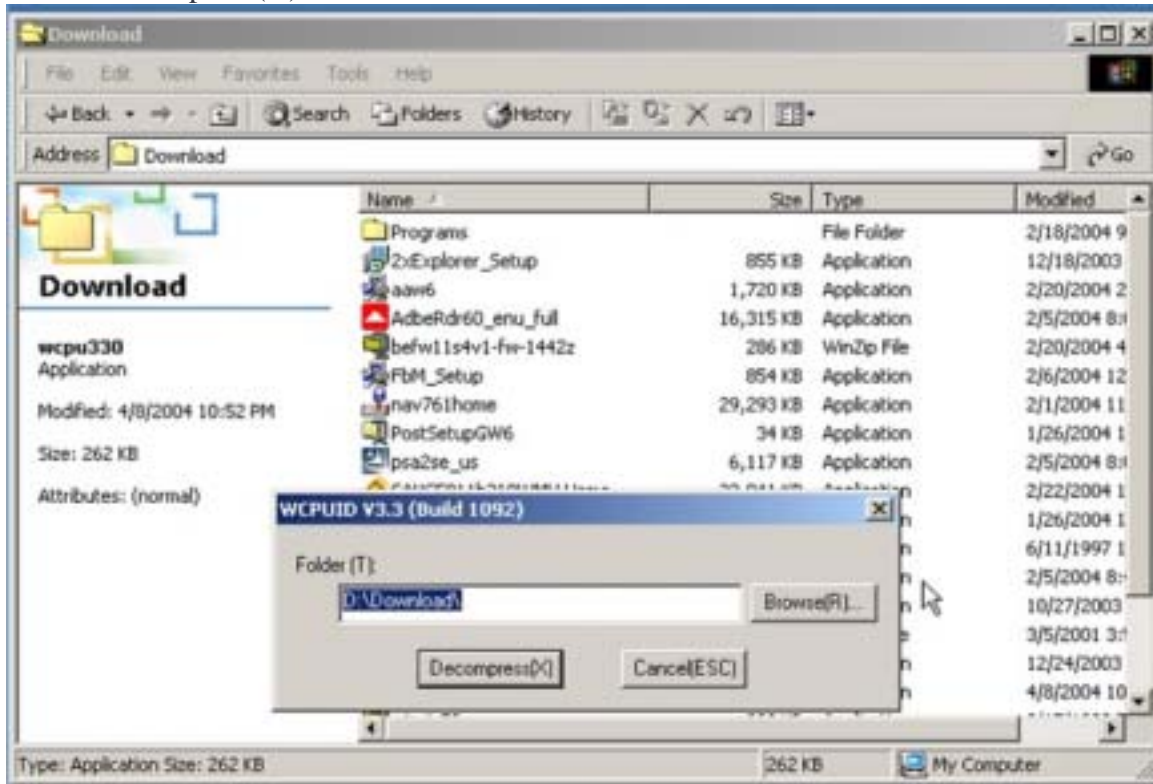
Click here ⇒ **Download** to get the file “Wcpu330.exe”

Save this file to the folder you just created

Open ‘Wcup330’ folder and click on ‘Wcpu330.exe’

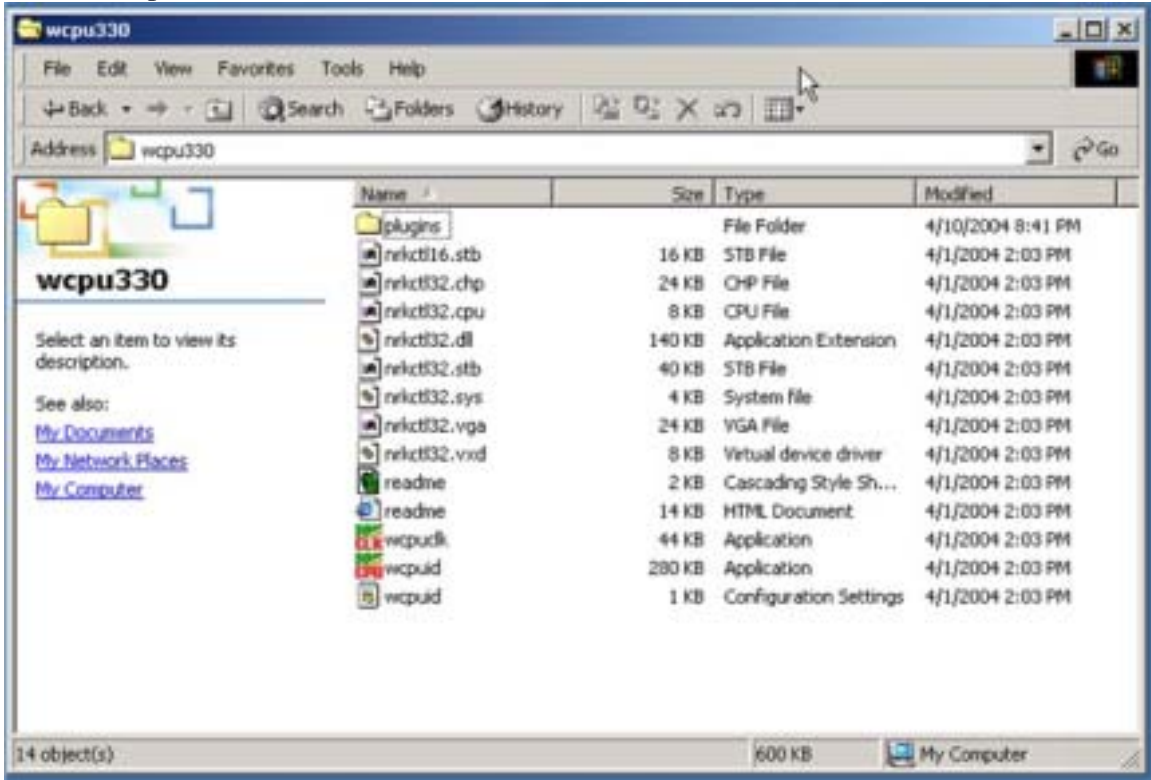
Make sure folder shown is “C:\Wcup330\” and, if it is not, change it by typing the information in

Click “Decompress(X)” button



(see next page)

After the installation is completed, open 'Wcpu330' folder  
Click "wcpuid"



(see next page)

The information you look for are:  
 Last line in [WCPUID Version 3.3] box  
 Number following Internal Clock  
 Number under 'Memory'

- ⇒ this is your operating system
- ⇒ this is your processor speed
- ⇒ this is the installed memory

The screenshot shows the WCPUID / CPU Status application window. The main content area is titled "[WCPUID Version 3.3]" and contains several sections of system data:

- Processor Information:**
  - Processor: Intel Pentium II
  - Platform: Slot 1 (SC242 Connector)
  - Vendor String: GenuineIntel
  - CPU Type: Original OEM Processor 0
  - Family: 6, Model: 5, Stepping ID: 2 (Standard)
  - Name String: (empty)
- Clock and Bus Information:**
  - Internal Clock: 349.12 MHz
  - System Clock: 99.75 MHz
  - System Bus: 99.75 MHz
  - Multiplier: 3.5
- Cache Information:**
  - L1 I-Cache: 16 K Byte
  - L1 D-Cache: 16 K Byte
  - L2 Cache: 512 K Byte
  - L2 Speed: Half
  - L2 Speed (MHz): 174.56
- Supported Features:**
  - MMX: Supported
  - SSE: Not Supported
  - SSE2: Not Supported
  - SSE3: Not Supported
  - MMX+: Not Supported
  - 3DNow!: Not Supported
  - 3DNow!+: Not Supported
- Operating System:** Windows 2000 Version 5.0.2195 Service Pack 3

On the right side of the window, there are additional system metrics:

- Date/Time:** 04/10/2004, 22:01:40
- Chipset:** 8086:7190.02, 8086:7111.01
- VGA:** 1002:4742.5C
- Memory:** 320 M Byte

A vertical green bar on the left side of the window contains the text "WCPUID \*\*\*\*\* MHz". The bottom of the window displays copyright information: "Copyright (c) 1996-2004 H.Odal, All Rights Reserved. F9839D70".