

Engineering Education for the Global Economy(EEGE)

William E. Kelly
American Society for Engineering
Education

ABSTRACT

The American Society for Engineering Education (ASEE) began as the Society for the Promotion of Engineering Education in 1893 and published a series of transformational reports on Engineering Education over the course of the 20th Century. Recognizing the many facets of globalization that are already driving engineering in new directions in the 21st Century, the ASEE, with the support of the National Science Foundation, is again at work to develop and then implement ASEE strategies, actions, and activities to support necessary change in engineering education. Some of the unique aspects of the EEGE effort are the goal of encouraging a more research-based approach to engineering education, raising the status of educational research versus traditional engineering research, and promoting engineering education practice.

Goals of EEGE Study

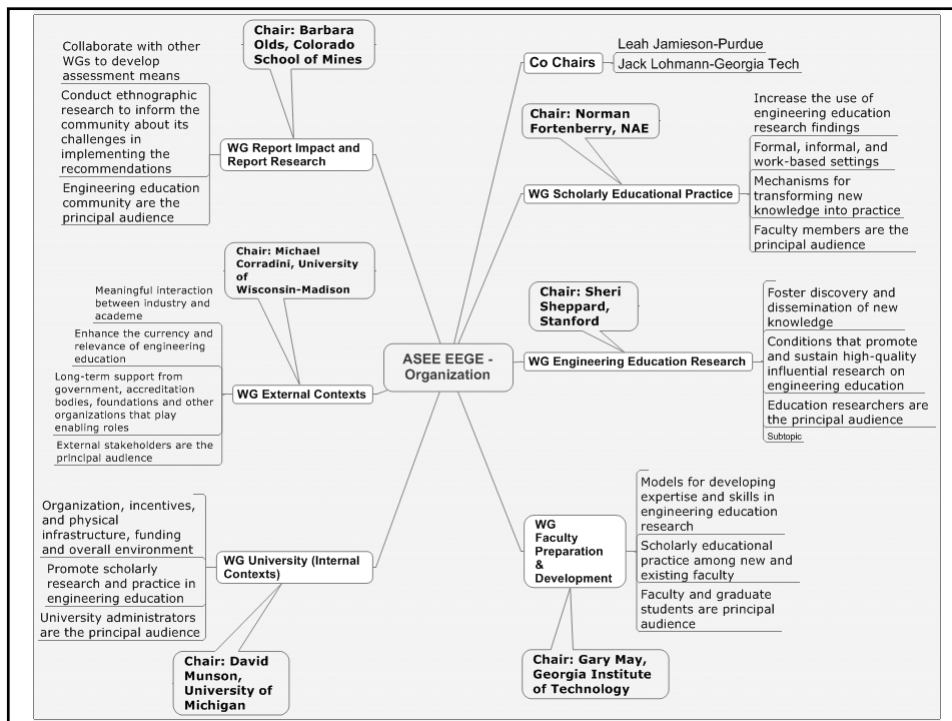
- Build on YOD and other sources on input
- Prepare a report by June 2009
 - Blueprint for the transformation of engineering education
 - Based on educational scholarship
 - Prepare graduate for practice in the 21st century
 - Develop the faculty needed for the 21st century
- Initiate and report on substantive action to advance the recommendation by June 2010

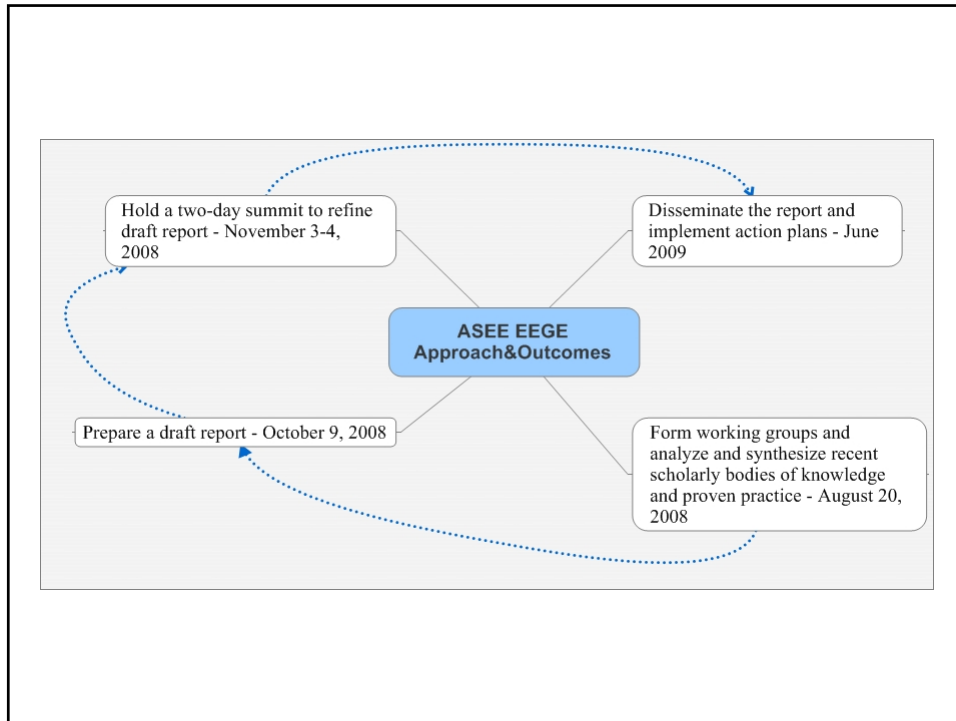
Principal Outcomes

- Enhance the capacity of US engineering education to attract, retain, and better prepare engineering graduates
- Advance and sustain research in engineering education
- Foster collaboration between scholars and practitioners in engineering and engineering education
- Broadly disseminate innovative practices in engineering education confirmed by scholarship

Six Working Groups

- Scholarly educational practice
- Engineering education research
- Faculty preparation and development
- University (internal) contexts
- External contexts
- Report impact and research





For More Information

- Contact Bill Kelly w.kelly@asee.org
- Visit the web site
<http://www.asee.org/about/EEGE-Committee.cfm>