

A Beach is a Beach...



Or is it?

www.wmich.edu/corekids



What is a Beach?

A beach is a strip of shoreline washed by waves and tides.

All Beaches are not alike...

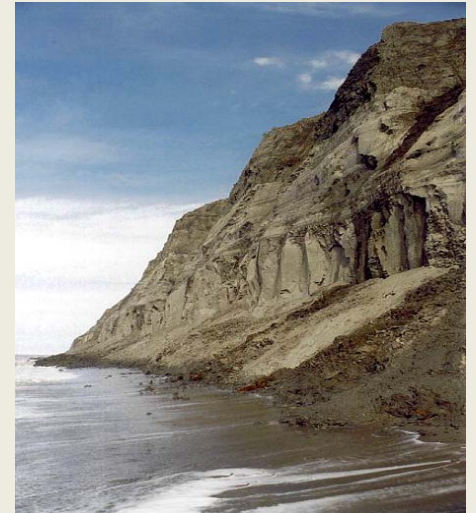
Some are sandy,



swampy,



narrow,



rocky,



or wide.

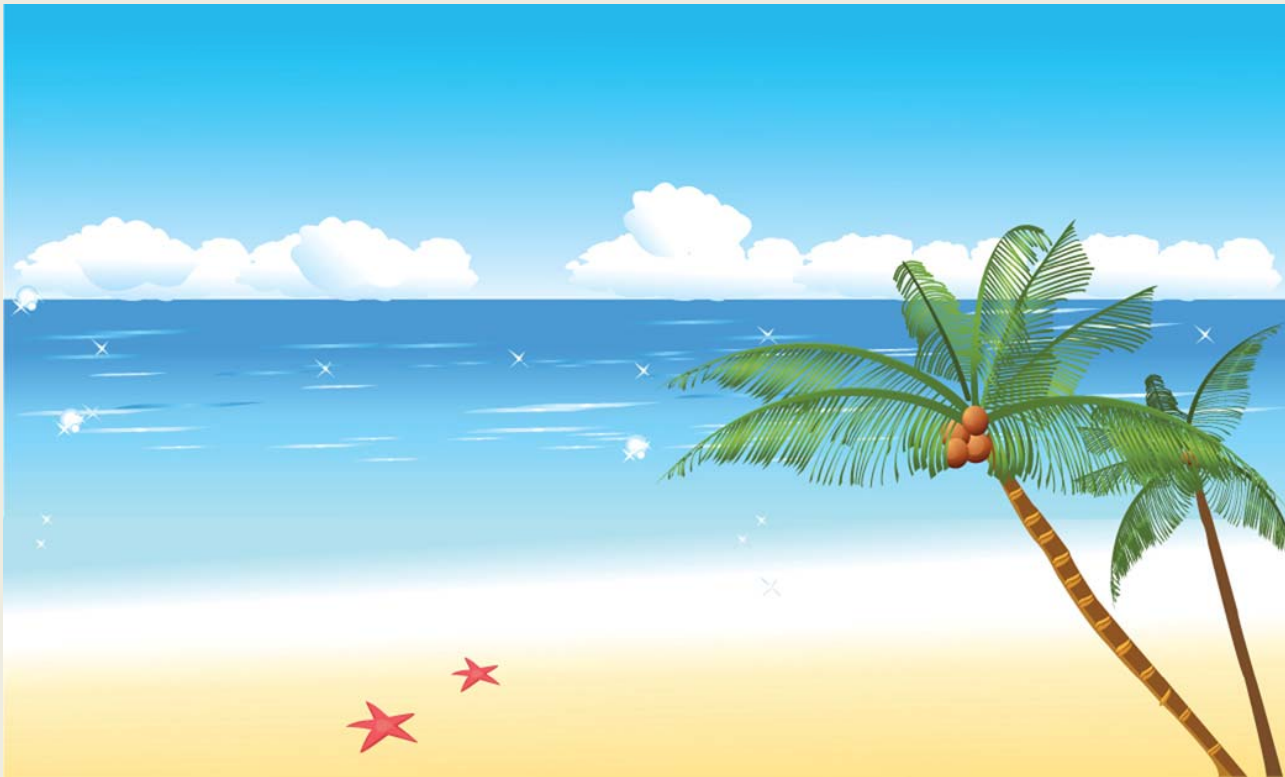


Is all beach sand the same?



Take a look at different sands

- What do you see in each one?
- Draw a picture of what you see
- Do they all look the same?



Is all beach sand the same?



Most beach sand is composed of quartz with other minerals and rock fragments mixed in.



When the sediment comes from the erosion of cliffs and nearby mountains the sand particles are large and the texture is coarse.



When most of the sediment is transported by rivers from further inland the sand texture is finer.

Is all beach sand the same?

Some beaches, like many of those in Florida, are made up of shell fragments and the remains of creatures that live in coastal waters.



Some beaches, like the black sand beaches of Hawaii, are made up entirely of rock fragments.



A photograph of a beach with waves crashing onto the shore. The sand is brown and wet. A white starfish is lying on the sand in the foreground. The text "So, is all beach sand the same?" is overlaid on the image.

So, is all beach sand the same?

NO!

Studying the grains of sand can tell us
where they came from.