

# Island X Beach Renourishment Project

## Accidental Consulting Services

"If we give you the right answer it was an accident."

The Island X Community Council has had several meetings to discuss what to do about their rapidly declining beach. This is a rich community where people bought their property several years ago because of broad, beautiful beaches. They are not happy that their beach has disappeared.

You, as an employee of the Accidental Consulting Services, have been hired to Determine what kind of sand to use to renourish their beach. You must consider A number of factors when making this decision. Even though the citizens have Chosen a number of beautiful sands to consider, you are the expert and must Decide whether these potential "source sands" are appropriate.

You will consider the following factors:

*The rest of this activity is coming soon.....take a look at the photos that go along with it and if you are interested in using it with your students please contact us at [susan.grammer@wmich.edu](mailto:susan.grammer@wmich.edu)*

## Student Instructions

*Coming soon*

Click on picture to enlarge

## Joulter's Cay, Bahamas



[Un-sieved sand](#)



[>2mm fraction](#)  
[X% by weight](#)



[1-2mm fraction](#)  
[X% by weight](#)



[500um-1mm fraction](#)  
[X% by weight](#)



[250um-500um fraction](#)  
[X% by weight](#)



[125um-250um fraction](#)  
[X% by weight](#)

Next Beach [Slide 10](#)

Click picture to go back

## Joulter's Cay, Bahamas

Un-sieved sand



[Click picture to go back](#)

## Joulter's Cay, Bahamas

>2mm fraction  
X% by weight



[Click picture to go back](#)

## Joulter's Cay, Bahamas

1-2mm fraction  
X% by weight





[Click picture to go back](#)

## Joulter's Cay, Bahamas

500um-1mm fraction  
X% by weight



[Click picture to go back](#)

## Joulter's Cay, Bahamas

250um-500um fraction  
X% by weight



Click picture to go back

## Joulter's Cay, Bahamas

125um-250um fraction  
X% by weight



Click on picture to enlarge

## Delray Beach, FL



Un-sieved sand



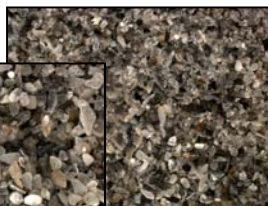
>2mm fraction  
X% by weight



1-2mm fraction  
X% by weight



500um-1mm fraction  
X% by weight



250um-500um fraction  
X% by weight



125um-250um fraction  
X% by weight



63-125um fraction  
X% by weight

Next Beach [Slide 18](#)



[Click picture to go back](#)

## Delray Beach, FL

Un-sieved sand



[Click picture to go back](#)

## Delray Beach, FL

>2mm fraction  
X% by weight



## Delray Beach, FL

1-2mm fraction  
X% by weight



[Click picture to go back](#)

## Delray Beach, FL

500um-1mm fraction  
X% by weight





[Click picture to go back](#)

## Delray Beach, FL

250um-500um fraction  
X% by weight



[Click picture to go back](#)

## Delray Beach, FL

125um-250um fraction  
X% by weight





Click picture to go back

## Delray Beach, FL

63-125um fraction  
X% by weight



Click on picture to enlarge

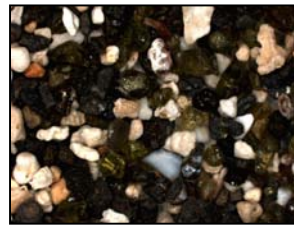
## Papakolea Beach, Hawaii



Un-sieved sand



>2mm fraction  
X% by weight



1-2mm fraction  
X% by weight



500um-1mm fraction  
X% by weight



250um-500um fraction  
X% by weight



125um-250um fraction  
X% by weight

[Views of Papakolea Beach, Hawaii](#)

Next Beach [Slide 25](#)

[Click picture to go back](#)

## Papakolea Beach, Hawaii

Un-sieved sand



[Click picture to go back](#)

## Papakolea Beach, Hawaii

>2mm fraction  
X% by weight





[Click picture to go back](#)

## Papakolea Beach, Hawaii

1-2mm fraction  
X% by weight



[Click picture to go back](#)

## Papakolea Beach, Hawaii

500um-1mm fraction  
X% by weight





[Click picture to go back](#)

## Papakolea Beach, Hawaii

250um-500um fraction  
X% by weight



[Click picture to go back](#)

## Papakolea Beach, Hawaii

125um-250um fraction  
X% by weight



Click on picture to enlarge

## Cayman Islands



Un-sieved sand



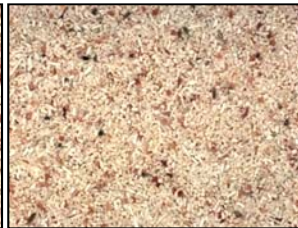
1-2mm fraction  
X% by weight



500um-1mm fraction  
X% by weight



250um-500um fraction  
X% by weight



125um-250um fraction  
X% by weight

Back to [Sieve Analysis and Microscopy](#)

Click picture to go back

## Cayman Islands

Unsieved sand





[Click picture to go back](#)

## Cayman Islands

1-2mm fraction  
X% by weight



[Click picture to go back](#)

## Cayman Islands

.5-1mm fraction  
X% by weight





[Click picture to go back](#)

## Cayman Islands

250um-500um fraction  
X% by weight



[Click picture to go back](#)

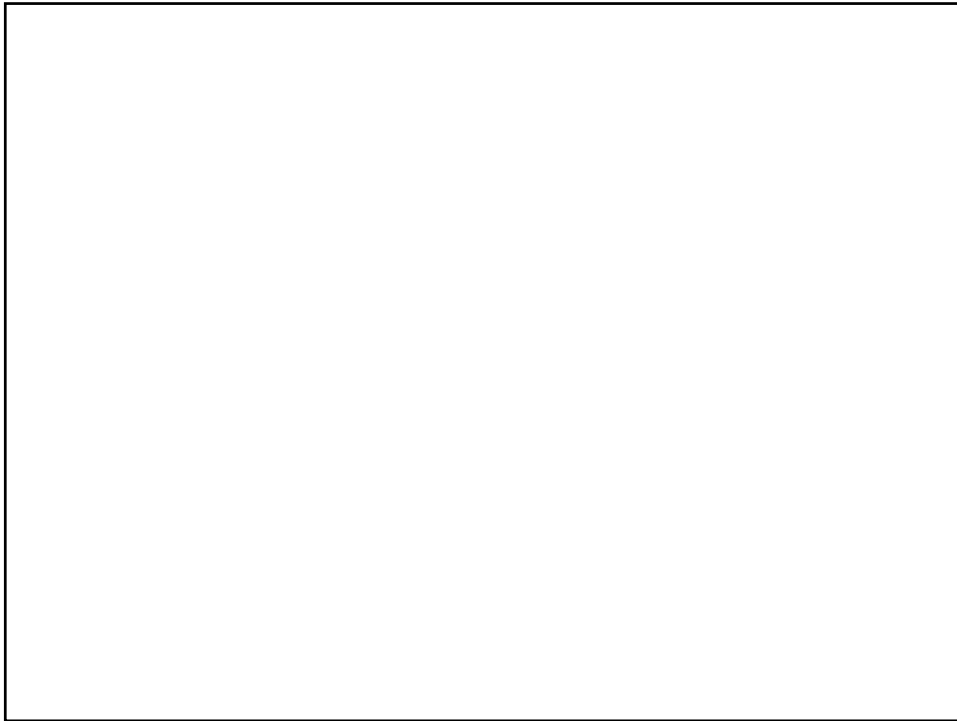
## Cayman Islands

125um-250um fraction  
X% by weight



### Views of Papakolea Beach, Hawaii





## Benchmarks and Standards

- National Science Education Standards
  - Science as inquiry
  - Earth and space science
  - Science in personal and social perspective
- AAAS Benchmarks for Science Literacy
  - The nature of science
  - The physical setting
  - Common themes
  - Habits of mind
- Michigan Curriculum Framework Science Benchmarks
  - Constructing new scientific knowledge
  - Reflecting on scientific knowledge
  - Using earth science knowledge
- Michigan Curriculum Framework Social Studies Benchmarks
  - ..