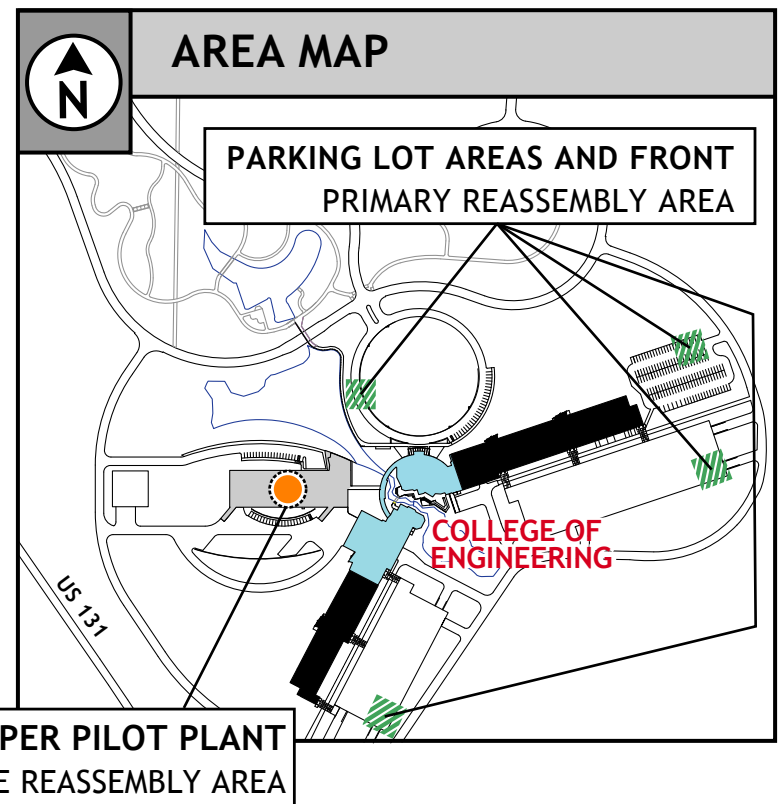
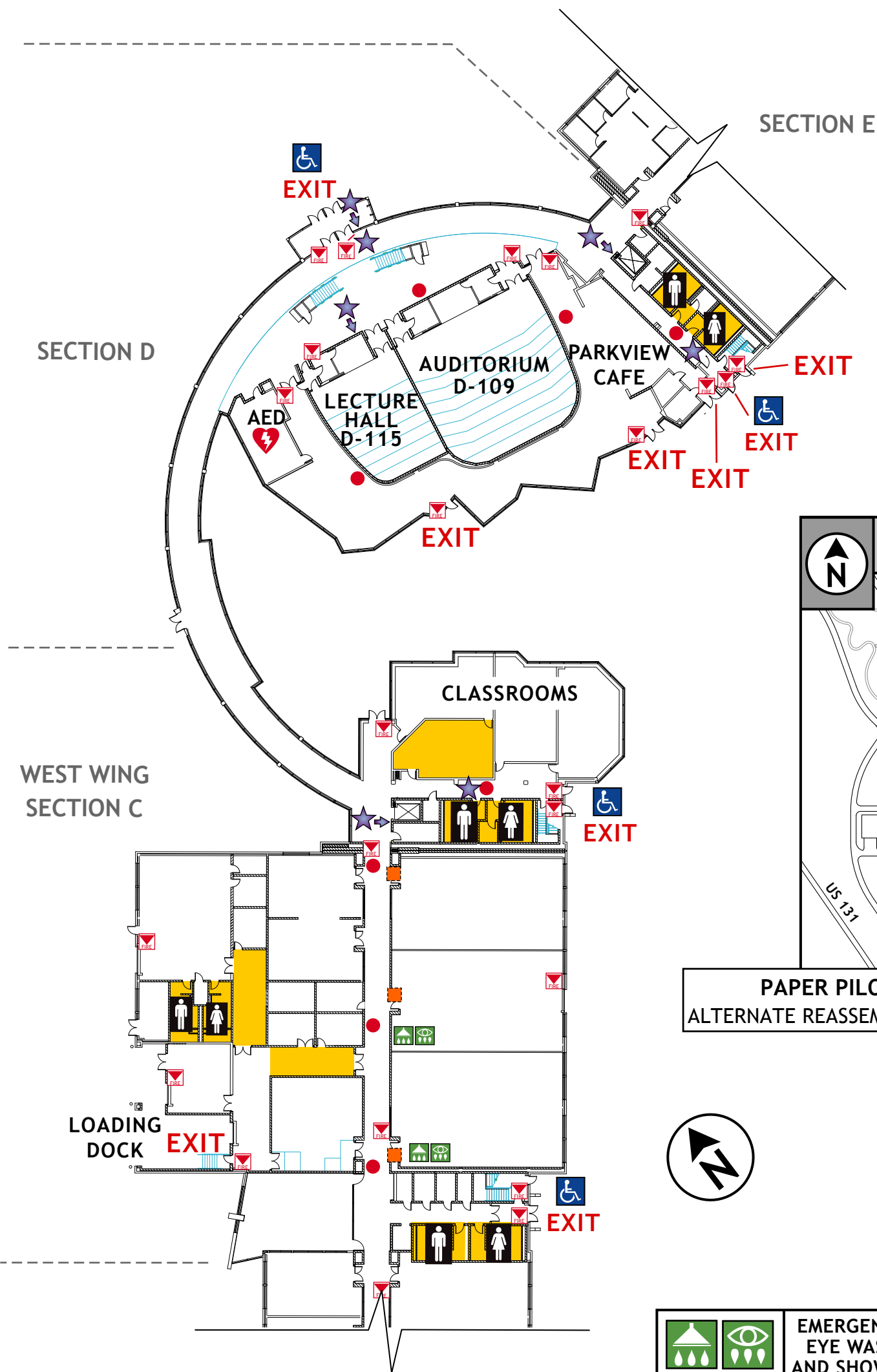
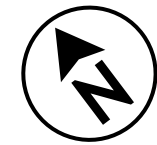


# EMERGENCY GUIDE

# EMERGENCY PHONE # 911



**TORNADO SHELTER AREA - THIS FLOOR**



	EMERGENCY EYE WASH AND SHOWER
	NATURAL GAS SHUT-OFF

## 1ST FLOOR LEGEND

- YOU ARE HERE
- FIRE ALARM PULL BOX
- FIRE EXTINGUISHER
- TORNADO SHELTER AREA
- PRIMARY REASSEMBLY AREA
- ALTERNATE REASSEMBLY AREA
- TO OUTSIDE **EXIT**
- ACCESSIBLE **EXIT**
- RESTROOMS
- STAIRWELL

## EMERGENCY GUIDELINES

- FAMILIARIZE YOURSELF WITH ALL **EXIT** LOCATIONS
- KNOW WHERE ALL FIRE AND SAFETY EQUIPMENT IS LOCATED
- KNOW YOUR EVACUATION ASSEMBLY AREA
- PROCEED TO THE **TORNADO SHELTER AREA** IN THE EVENT OF A TORNADO
- DO NOT USE ELEVATORS DURING A FIRE - USE ONLY STAIRWELLS