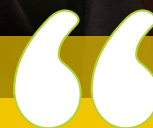


EDUCATIONAL LEADERSHIP

Master of Arts

wmich.edu/leadership/academics



The program gave me a well-rounded knowledge base. One of the most valuable things I walked away with was the opportunity to learn among other educators.

Education leadership alumni

ABOUT THE PROGRAM

This program and its four concentrations prepare leaders in educational organizations, including administrators in K-12 schools, higher education, governmental agencies and professional associations. Courses support active instruction by merging cutting-edge theory with best practices, and are taught using evening, weekend and/or online formats.



This program is flexible with **both K-12 concentrations being offered fully online**. As a WMU online student you are part of a community of professionals and learners from across the country.



The educational leadership unit at WMU is **accredited by the Council for the Accreditation of Educator Preparation**.

269-387-3896 | cehd-outreach@wmich.edu | wmich.edu/grad/apply

[f](#) [@](#) [t](#) [v](#) | @WMUCEHD



WESTERN MICHIGAN UNIVERSITY
College of Education
and Human Development


EDUCATIONAL LEADERSHIP


Master of Arts

wmich.edu/leadership/academics

CONCENTRATIONS

Higher Education and Student Affairs (HESA): This program focuses on developing reflective practitioners for entry- and mid-level positions in higher education. Distinctive to the program is an emphasis on the centrality of diversity and inclusiveness in higher education. One of the ways this is actualized is through a required and individually designed diversity cognate.

 **K-12 Principal and Interscholastic Athletic Administration:** This program is designed to prepare a student for the leadership role of being a building principal, as well as an athletic director. Students who complete this concentration will be recommended to receive the Michigan School Administrator Certificate.

 **K-12 School Principal Leadership:** This program is designed to prepare a student for the leadership role of being a building principal. Students who complete this concentration will be recommended to receive the Michigan School Administrator Certificate.

Educational and Global Leadership (EGL): This program is designed for graduate students who wish to develop and enhance their leadership knowledge and skills within educational or other cultural organizations that have an international dimension. It is also designed for students who desire a focus on global education in order to support their educational leadership practice.

Higher Education and Student Affairs

Dr. Ramona Lewis, Program Coordinator
ramona.lewis@wmich.edu | 269-387-3883

K-12 Principal and Interscholastic Athletic Administration

Dr. Wayne "Rusty" Stitt, Program Coordinator
wayne.r.stitt@wmich.edu | 269-387-3569



100% of WMU educational leadership graduates were employed or continuing education within three months of graduation.

K-12 School Principal Leadership

Dr. Wayne "Rusty" Stitt, Program Coordinator
wayne.r.stitt@wmich.edu | 269-387-3569

Educational and Global Leadership

Dr. Eric Archer, Program Coordinator
eric.archer@wmich.edu | 269-387-3888