

WMU'S GUIDE TO RECYCLING

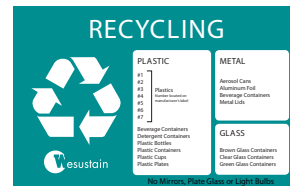


The Office
for Sustainability

SINGLE STREAM RECYCLING AT WMU*

GPM RECYCLING (glass, plastic, metal)

- Plastics #1-7 (bottom of containers)
- Plastic beverage bottles
- Aluminum cans
- Glass containers/ jars
- Empty aerosol cans



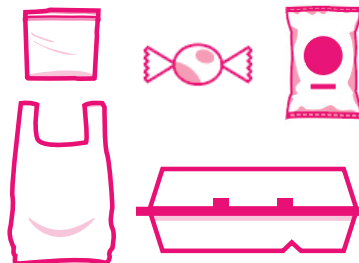
PAPER/CARDBOARD RECYCLING

- Printer and notebook paper
- Newspapers and magazines
- Flattened boxes



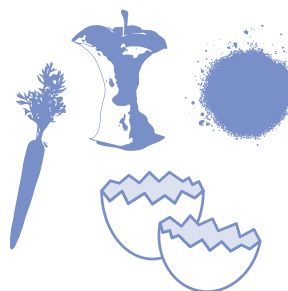
LANDFILL

- All plastic bags
- Food wrappers
- Wax coated boxes (frozen food boxes & drink containers)
- Food waste
- Pizza boxes
- Lids/ straws
- Dirty paper cups/ plates



COMPOSTING

- Fruits
- Vegetables
- Egg shells
- Coffee Grounds



ADDITIONAL INFORMATION

- All recyclables must be CLEAN of food and contaminants
- Polystyrene Foam #6 can be recycled at the Office for Sustainability
- A used aluminum can is recycled and back on the grocery shelf in less than 60 days
- If all our newspaper was recycled, 250,000,000 trees could be saved each year
- Americans use 2,500,000 plastic bottles every hour, most of which are thrown away
- Remember to Reduce consumption, Reuse items, and Recycle

*RECYCLING MAY BE PLACED IN ONE CONTAINER
AND DOES NOT NEED TO BE SEPARATED



WESTERN MICHIGAN UNIVERSITY
Office for Sustainability