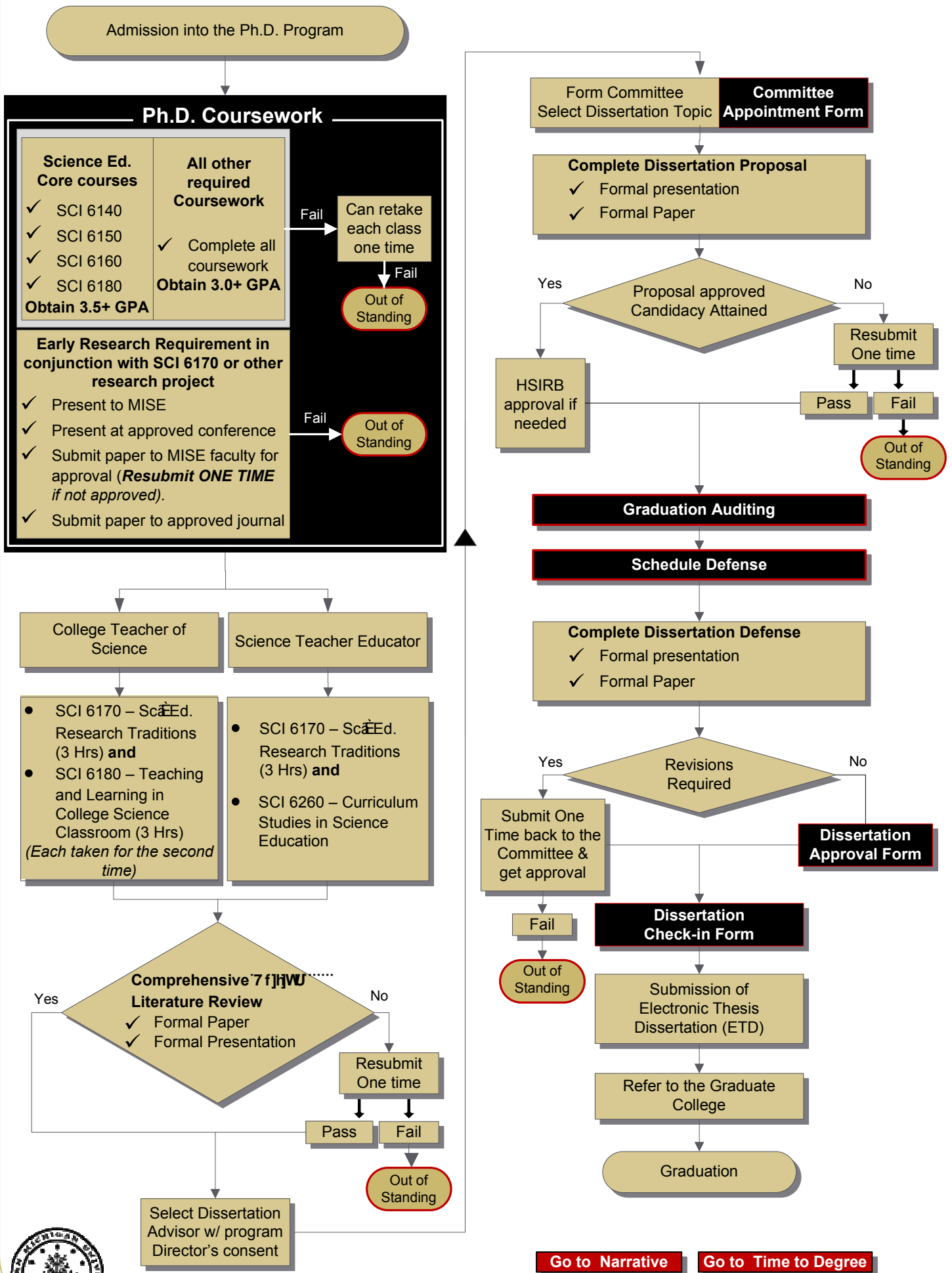


# Flowchart: Science Education Doctoral Program



## Narrative of the Flowchart: Science Education Doctoral Program

1. Admission into the Ph.D. program.
2. Complete Prerequisites if applicable.
3. Start the Ph.D. course work. Take at least 48 hours of graduate work beyond the courses counted toward a Master's Degree. Courses consist of:
  - SCI 6140 - Science: Historical and Philosophical Perspectives Credits: **3 hrs.**
  - SCI 6150 - Science Education: Historical and Philosophical Foundations Credits: **3 hrs.**
  - SCI 6160 - Science Education: Models of Learning and Teaching Credits: **3 hrs.**
  - SCI 6170 - Science Education: Research Traditions Credits: **3 hrs.**
  - SCI 6180 - Teaching and Learning in the College Science Classroom Credits: **3 hours**

### **AND**

*For The College Teacher of Science Curriculum select:*

- SCI 6170 - Science Education: Research Traditions Credits: **3 hrs. AND**
- SCI 6180 - Teaching and Learning in the College Science Classroom Credits: **3 hours**  
(Each taken for a second time)

*For The Science Teacher Educator Curriculum select:*

- SCI 6170 - Science Education: Research Traditions Credits: **3 hrs. AND**
- SCI 6260 - Curriculum Studies in Science Education Credits: **3 hours**

4. Complete early research requirements: Comprehensive Critical Literature Review requirements and Dissertation Proposal requirements
5. Meet with the Director of the Program to establish a Dissertation Committee
6. Select a dissertation Topic
7. Oral Presentation of Dissertation Proposal
8. Register for Dissertation Credit (15 hrs of SCI 7300)
9. Complete the Residency enrollment requirement, which includes two consecutive semesters of full-time study on campus. Complete the approved Research Tools by the advisor
10. Candidacy is established after students complete Coursework, Research Tools, CCLR, and a Teaching Experience.
11. HSIRB Approval
12. Collect Data
13. Complete The Graduate College (TGC) forms.
14. Schedule the Defense and apply for the Graduation Audit.
15. Complete the Oral Dissertation Defense.
16. Finish the required revisions.
17. Submit back to the Committee & get approval.
18. Submit the Electronic Thesis Dissertation (ETD)/ Submit Standard Dissertation.
19. Graduation.



[Go to Time to Degree](#)

[Go to Flowchart](#)