

# 2024-25 Bronco Marching Band Audition Music

Clarinet in B $\flat$

## C Major Scale

**Allegro** (M.M. ♩ = c. 120) (play both octaves if possible)



## G Major Scale

(play both octaves if possible)

**Allegro** (M.M. ♩ = c. 120)



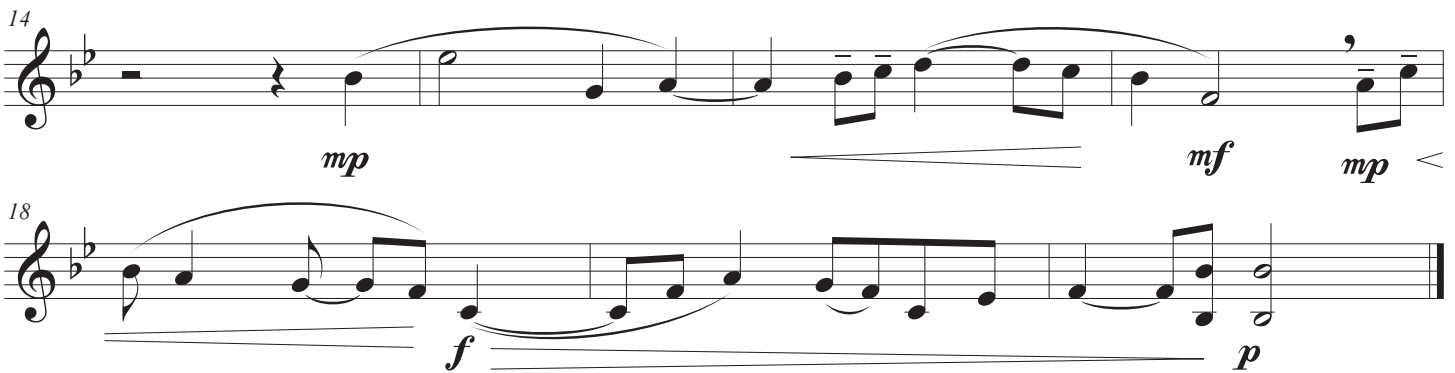
## D Major Scale

**Allegro** (M.M. ♩ = c. 120)



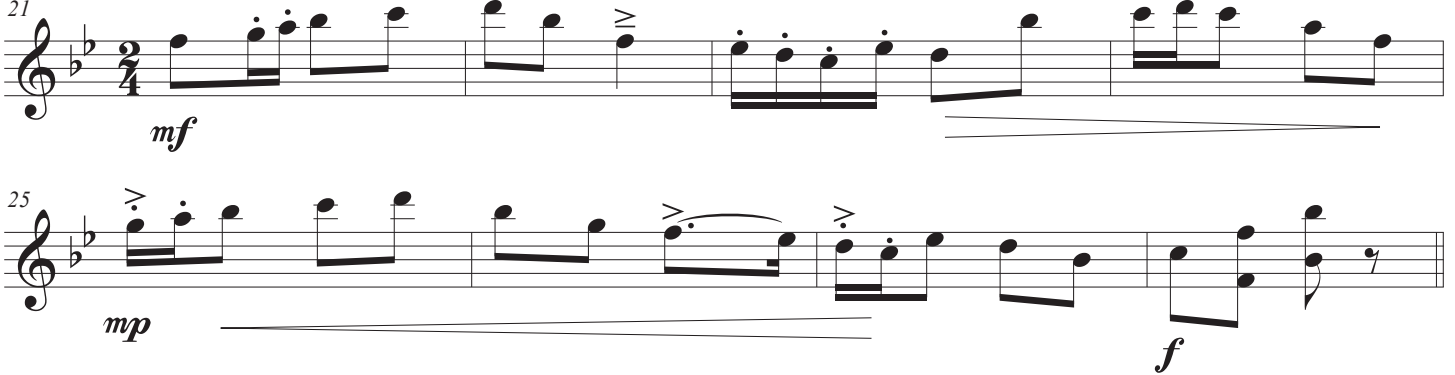
## Lyrical Example

**Andante** (♩ = 76)



## Technical Example

**Moderato** (♩ = c. 100)



### Chorale Example WMU Alma Mater

29 **Andante** (♩=72)  
*mf*



37



45  
*cresc. poco a poco*



53  
*f*



Detailed description: This block contains four staves of musical notation for a chorale. The first staff (measures 29-36) begins with a treble clef, a 2/2 time signature, and a tempo marking of 'Andante' with a quarter note equal to 72 beats per minute. The dynamics are marked 'mf'. The second staff (measures 37-44) continues the melody. The third staff (measures 45-52) includes the instruction 'cresc. poco a poco'. The fourth staff (measures 53-60) ends with a double bar line and a dynamic marking of 'f'. The music consists of a single melodic line with various note values and rests, often grouped by slurs.