

# Developing a Framework for Systems-Oriented Evaluation

Beverly Parsons, Ph.D.  
InSites

2014 President of the  
American Evaluation Association



# Basic Definition of a System

A system is an interconnected set of elements  
that is coherently organized in  
a way that achieves something.

Meadows, D. (2008). *Thinking in systems*.  
White River Junction, VT: Chelsea Green  
Publishing Company.

# Key Message

Systems-Oriented  
Evaluation:

From Afterthought  
to Forethought

Why?

Our  
Changing  
World

Social  
Systems

Then:

Stable, limited  
connections

Now:

Complex, connected,  
dynamic

Why?

Our  
Changing  
World

System  
Interventions

Then:  
Individual programs,  
policies

Now:  
Multi-faceted,  
overlapping, dynamic

Why?

Our  
Changing  
World

Evaluation  
Approach

Then:  
Formative and  
Summative

Now:  
Developmental with  
Nested Formative  
and Summative

# Formative Evaluation



A Support Network for  
Learning and Change

Beverly Parsons • [bparsons@insites.org](mailto:bparsons@insites.org) • [www.insites.org](http://www.insites.org)

# Summative Evaluation





# Developmental Evaluation

Adapts to  
changing  
conditions

Recognize  
s  
complexity

,  
uncertainty  
y

# Traditional Strategy Approach

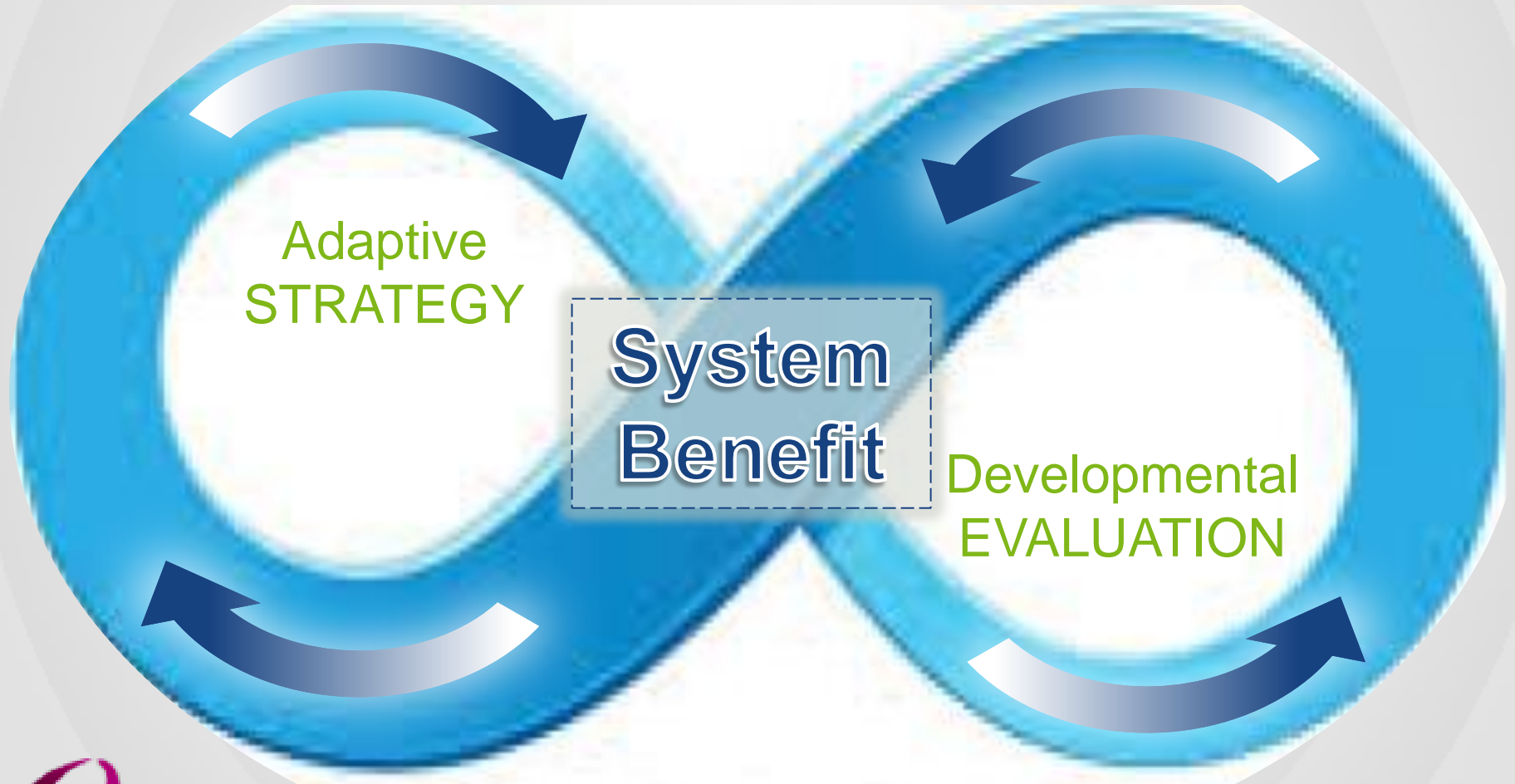
Establish goals

Develop action plan

Implement plan

Evaluate results

# Evaluation and Strategy Repositioned and Redesigned



# Developing an Evaluation Framework

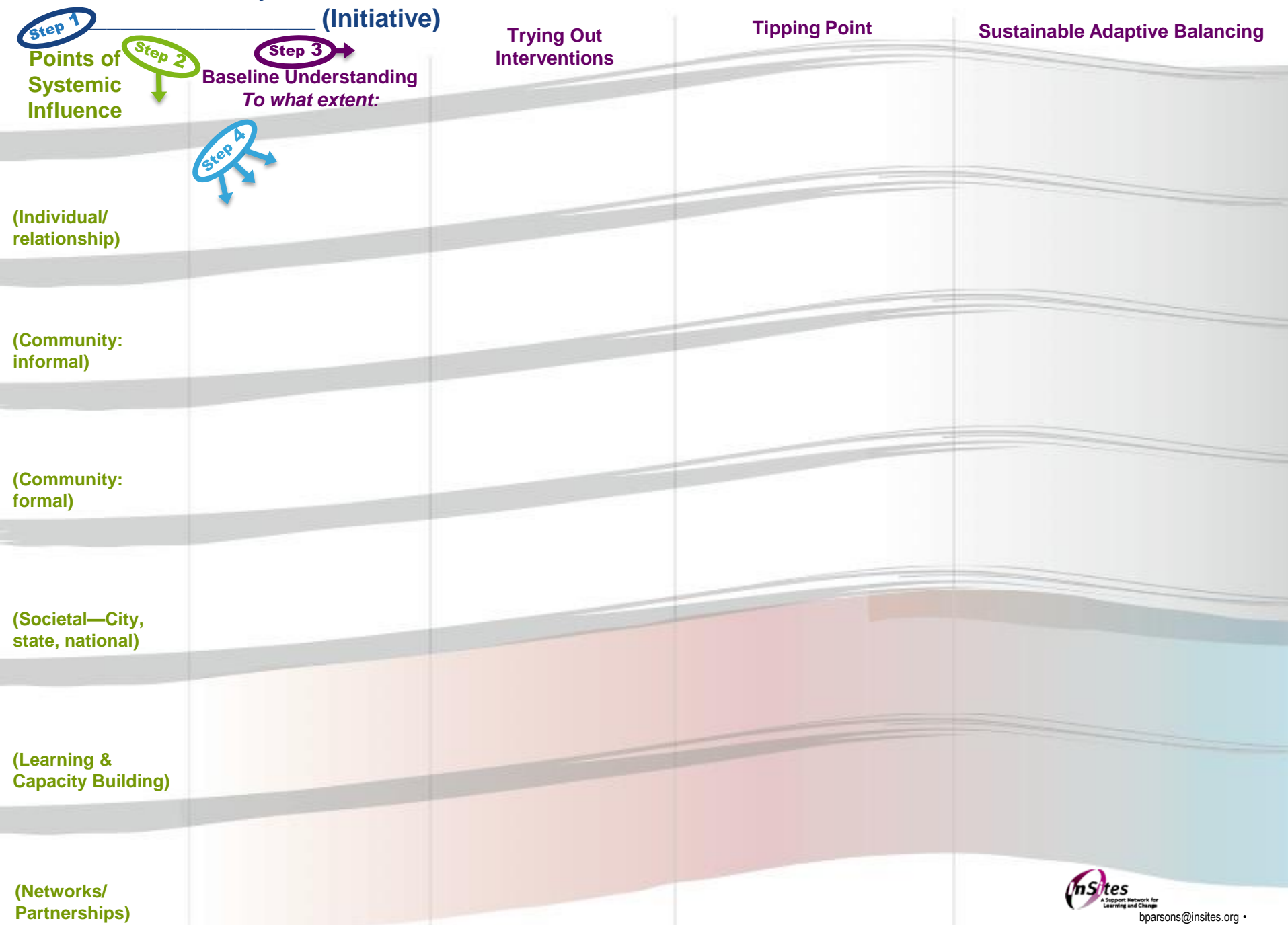
**Step 1.** Articulate  
Fundamental System Change  
Using Existing Evidence

**Step 2.** Identify Points of  
Systemic Influence

**Step 3.** Weave Strategy and  
Evaluation with System  
Change

**Step 4.** Identify Indicators of  
System Benefit

# Framework for Systems-Oriented Evaluation



# Value of the Evaluation Framework

## Link strategy and evaluation

# Value of the Evaluation Framework

Link strategy and  
evaluation

See the big picture

# Value of the Evaluation Framework

Link strategy and  
evaluation

See the big picture

Map actions among  
partners



# Value of the Evaluation Framework

Link strategy and  
evaluation

See the big picture

Map actions among  
partners

**Be transparent**

# Value of the Evaluation Framework

Link strategy and  
evaluation

See the big picture

Map actions among  
partners

Be transparent

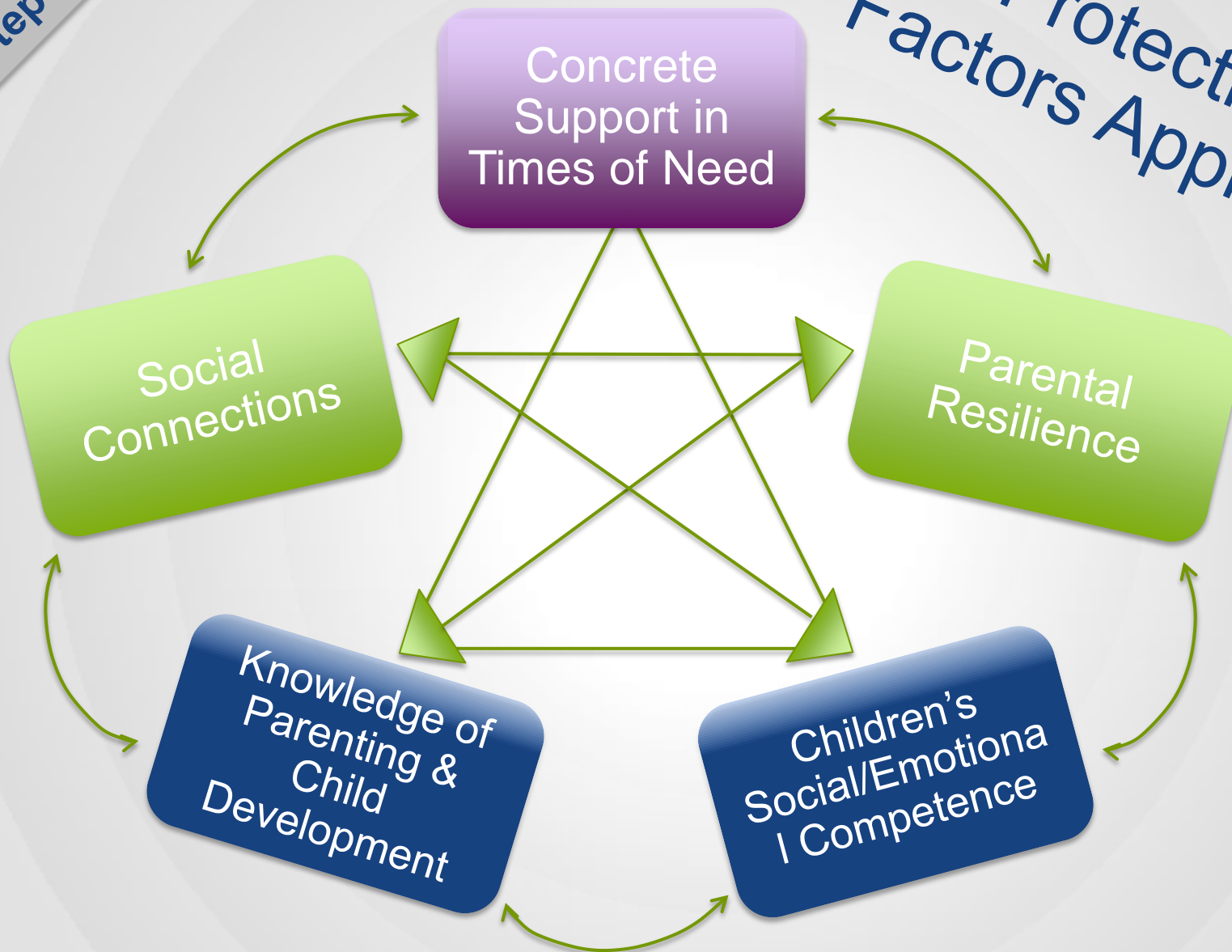
Map progress  
over time

# Articulate Desired System Change



Step One

# Protective Factors Approach



# Strong Start Denver

Adams

Arapahoe

Denver

Jefferson

There is no safe  
time to drink during pregnancy  
and no safe kind of alcohol  
to drink while pregnant

**Recovery** ➔



# Fostering Hope Salem

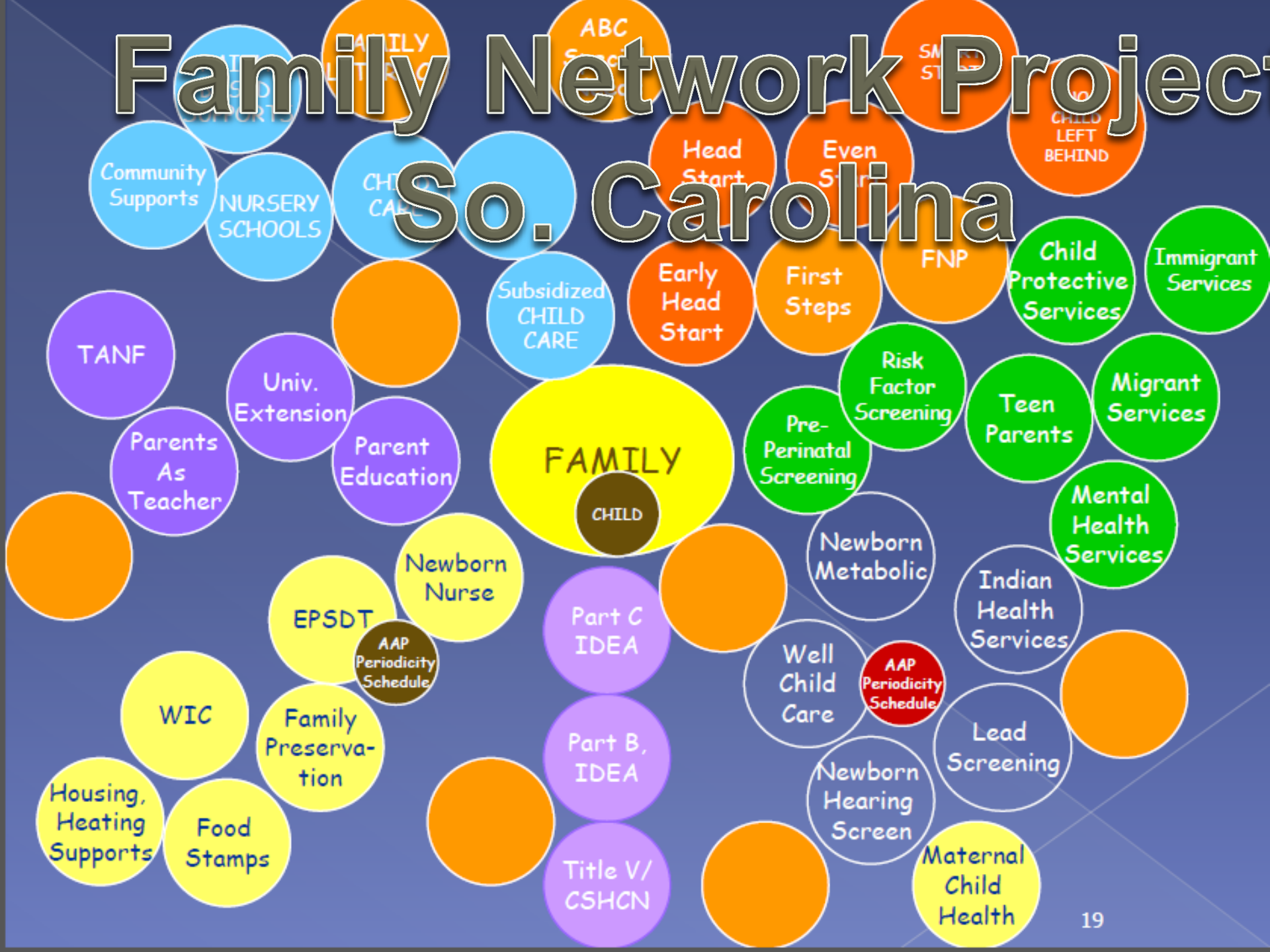




# Project Dulce Boston



# So. Carolina



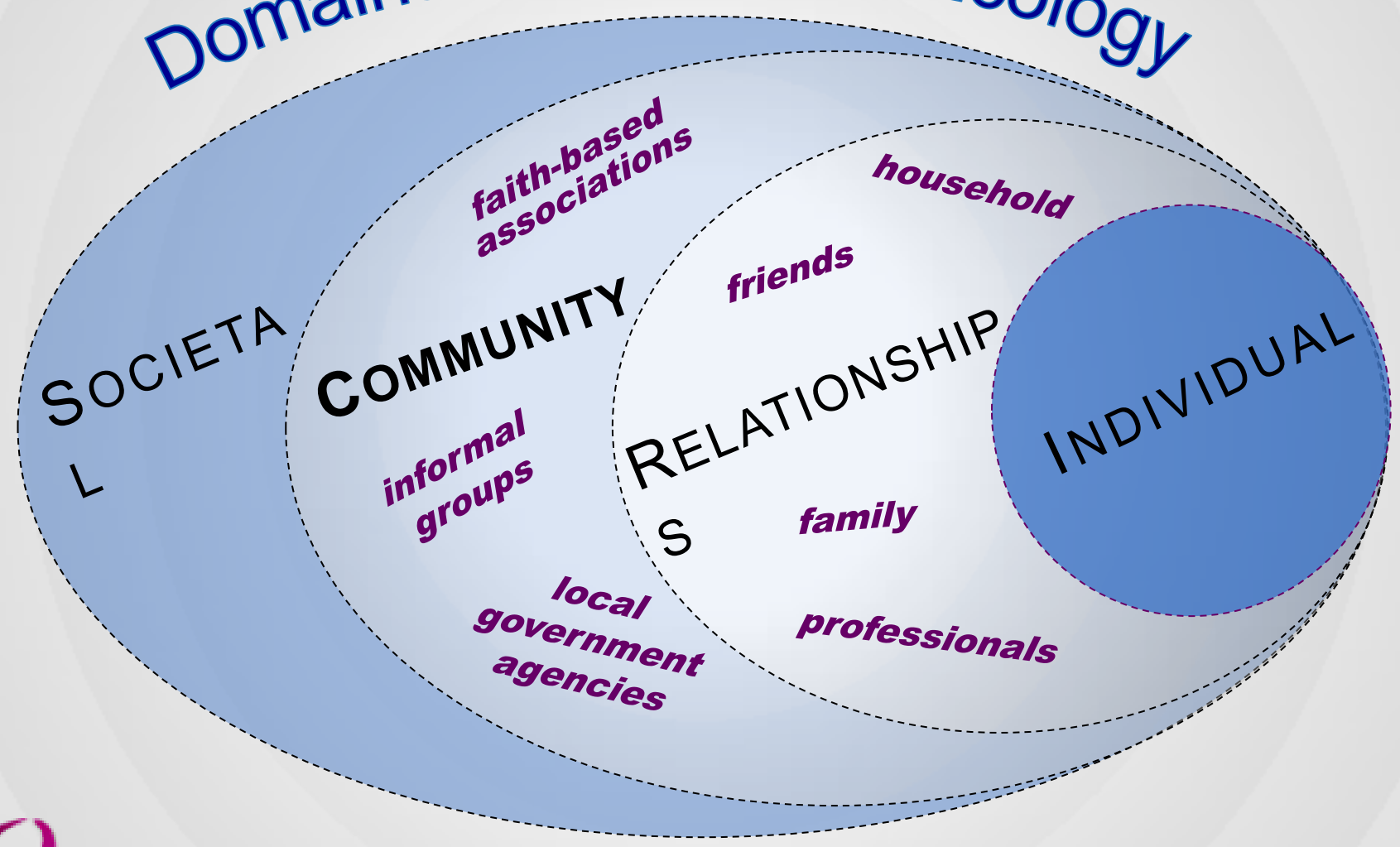


# Identify Points of Systemic Influence

---

**First:** Identify Relevant Domains  
of the Social Ecology

# Domains of the Social Ecology



# Social Ecology for Strengthening Families



# Identify Points of Systemic Influence

---

First: Identify Relevant Domains  
of the Social Ecology

Second: Identify Potential Levers  
for Change

# Levers for System Change

**Activities  
& Results**

**Patterns**

**Norms,  
Infrastructures  
& Policies**

**Principles**

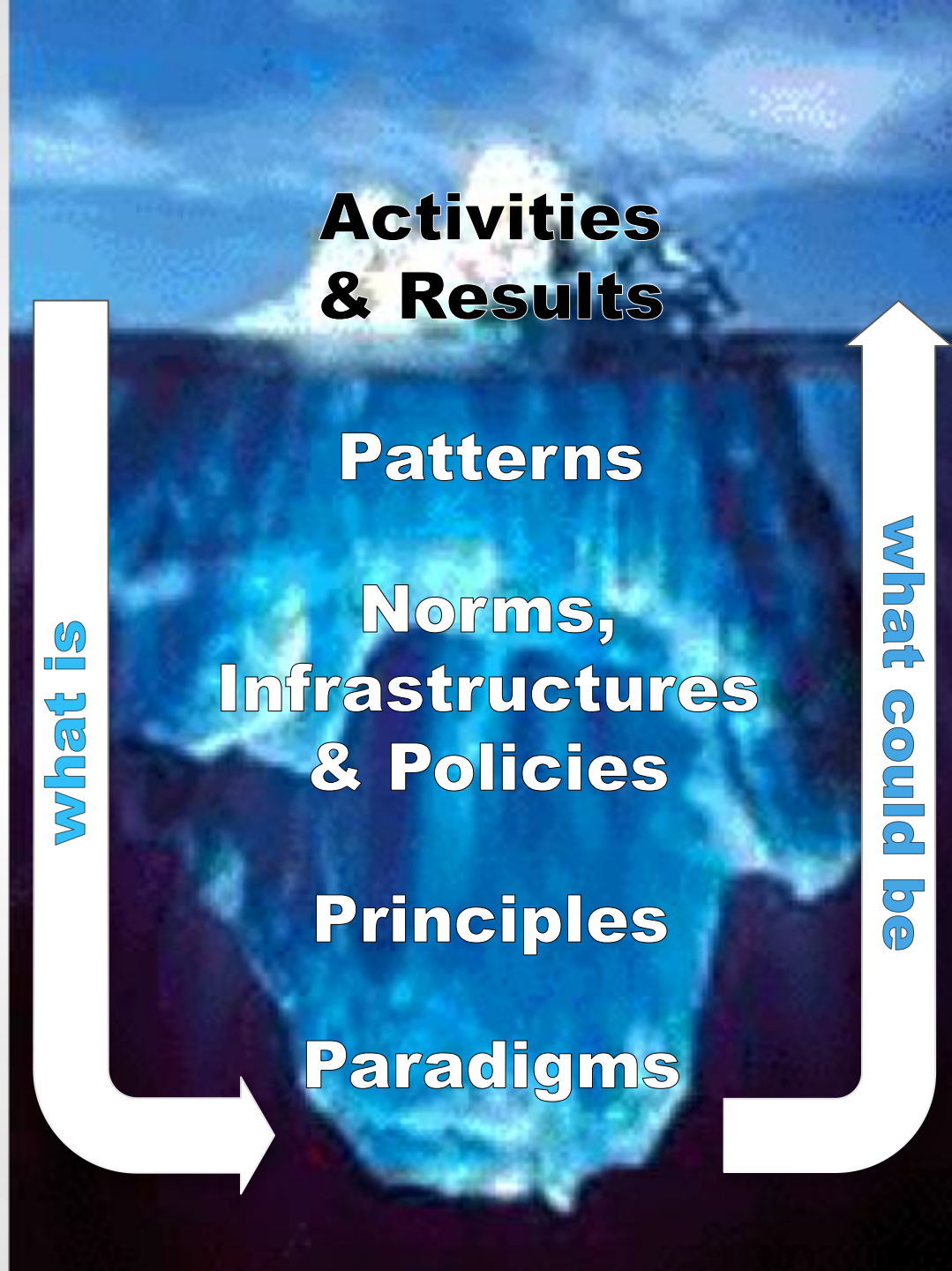
**Paradigms**



A Support Network for  
Learning and Change



# Levers for System Change



# Framework for Systems-Oriented Evaluation

## Step 1 Strengthening Families Initiative

**Points of Systemic Influence**

**Step 2**

**Step 3**

**Step 4**

**Caregiver-Child-Family**

**Baseline Understanding**

*To what extent:*

Are families aware of and practicing protective factors? Do parents use both organized and adaptive dynamics?

**Neighborhood/Community**

Are neighborhoods and their leaders building social cohesion around protective factors? Do they encourage adaptive and organized dynamics?

**Organizations, Providers (Norms, infrastructures, policy)**

Are organizations/services designed to support protective factors framework? Do providers encourage adaptive & organized dynamics to support building protective factors?

**Societal Actors (State & national) (Norms, policies, infrastructures)**

Are norms, infrastructures, policies based on protective factors/framework principles? Are policies attentive to both organized and adaptive dynamics?

**Stakeholder Learning & Capacity Building**

Do learning activities address protective factors and model both adaptive and organized dynamics?

**Networks/Partnerships**

Are networks/partnerships designed to encourage protective factors? Do networks/partnerships leverage adaptive and organized dynamics?

## Trying Out Interventions

Families test use of protective factors and determine changes in relationships and boundaries in daily life. Families learn to self-assess use of protective factors.

Neighborhoods/communities pilot new ways of functioning that are grounded in protective factors and social cohesion.

Organizations/providers pilot new ways of operating that emphasize protective factors framework. They determine cost implications.

Norms, infrastructures, policies targeted for change with engagement of multiple voices, perspectives, and valuing of protective factors.

Learning activities redesigned and tested with attention to protective factors and use of interactive, peer-to-peer learning and learning from families.

Networks, partnerships test change in norms, infrastructure, and policies among their members.

## Tipping Point

Enough families are habitually using and building protective factors that family norms are shifting in support of protective factors framework for living. Benefits being realized.

Neighborhoods & leaders commit to use and support protective factors. They leverage organized and adaptive dynamics. Desired social cohesion being achieved/supported.

Organizations/providers commit to redesigned norms/structures/policies that support protective factors framework & principles. They leverage organized and adaptive dynamics. Desired benefits being realized/supported.

Norms, infrastructures, policies overall encourage presence of protective factors. Leverage both organized and adaptive dynamics. Caregiver, child, family outcomes supported.

Communities of practice grounded in peer-to-peer learning and application are common; include reflection on use of protective and risk factor attention in different contexts.

Key partners, networkers have multiple interconnections that encourage attention to protective factors in a micro & macro level. Attention to protective factors framework is fundamental to connections.

## Sustainable Adaptive Balancing

Caregivers are connected with other caregivers and family members who are skilled at using and building protective factors. Family norms support protective factors. (Evidence of well-being of families and levels of child maltreatment regularly monitored.)

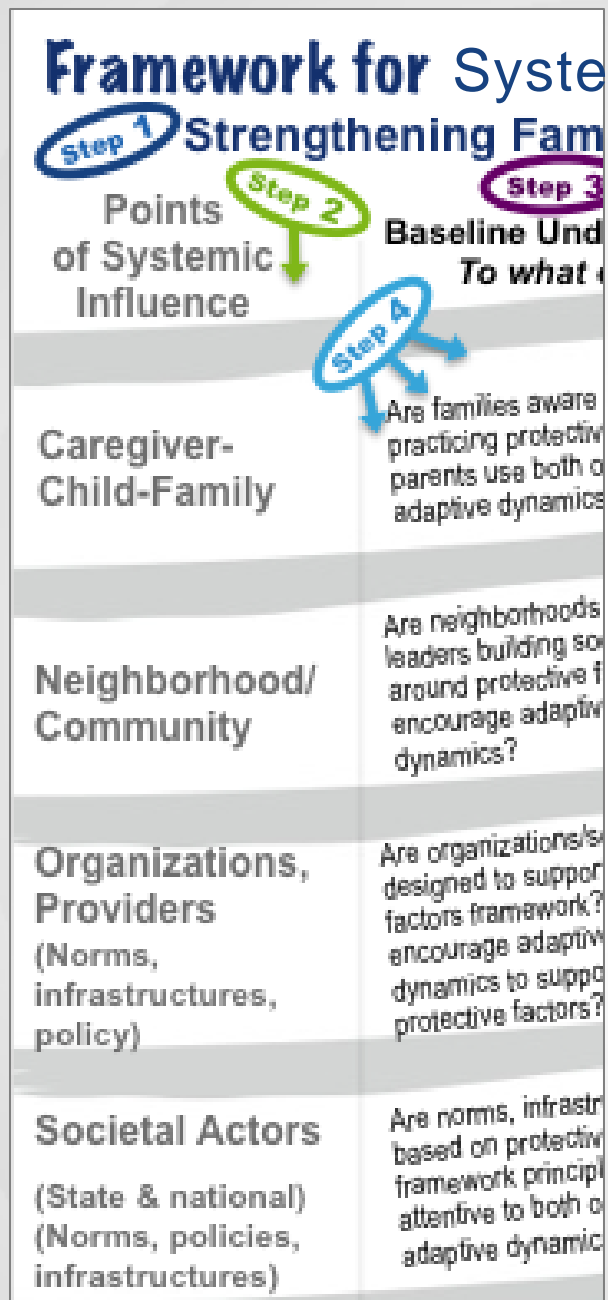
Neighborhoods & leaders adjust to social conditions in community and emphasis on supporting protective factors. They consider and reflect on their ways of functioning. (Evidence monitored.)

Organizations/providers use caregiver, child, family outcome and other data to adjust to social conditions in community with emphasis on presence of protective factors. Organizations/providers leverage both adaptive and organized dynamics.

Societal leaders balance attention to risk and protective factors tailored to micro-contexts. They address norms, infrastructures, policies and dynamics over time based on monitoring data and related new knowledge.

New knowledge development, dissemination, and integration woven into practice with learning activities and communities of practice used to shore up challenging areas. (Stakeholder knowledge and practice regularly assessed.)

Partners, networkers use data feedback to strategically shift connections to respond to contextual changes to ensure primary attention to protective factors. Shifts are based on systems thinking.



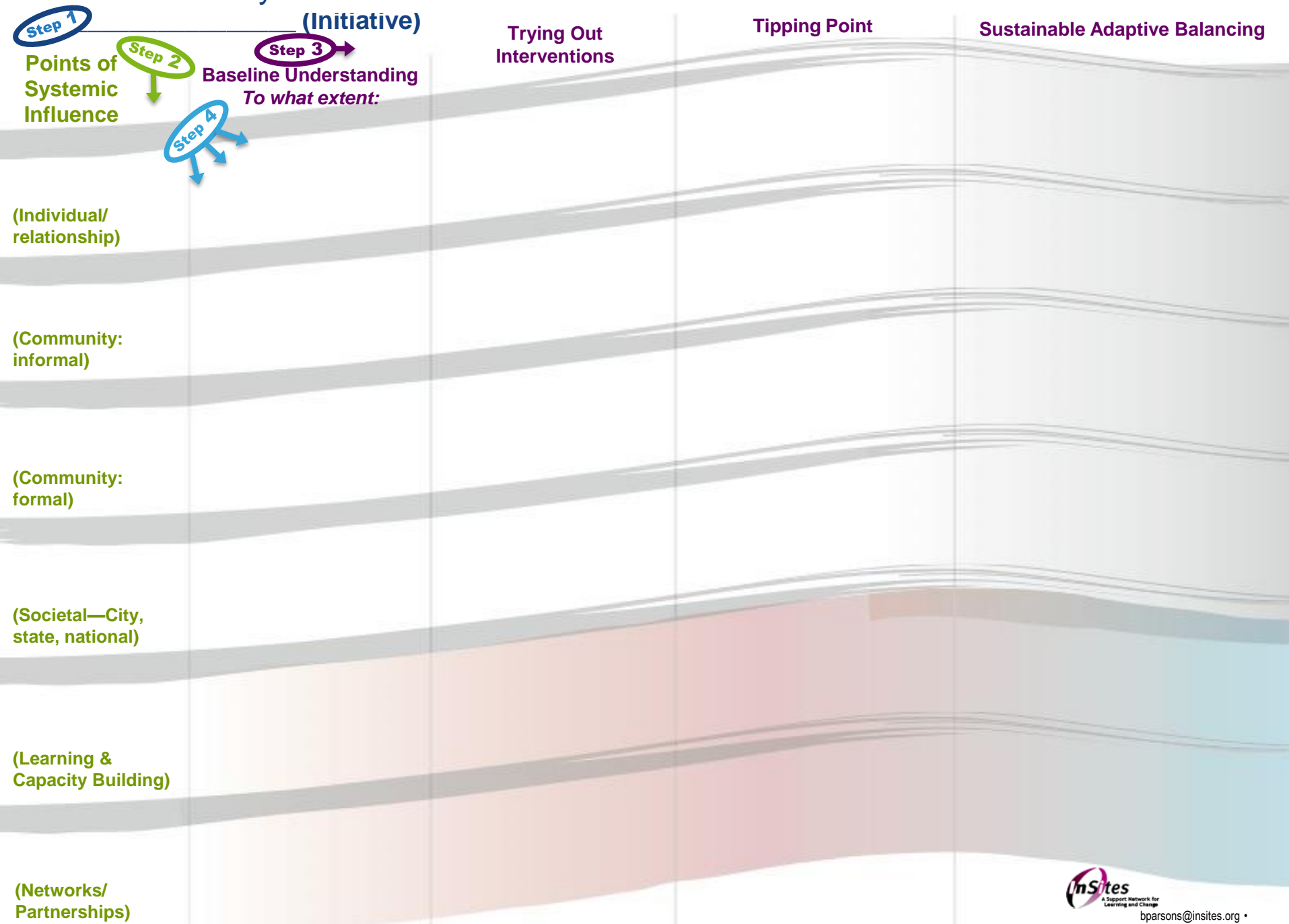
## Identify Actors within the Domains of Social Ecology





## Identify Actors within the Domains of Social Ecology

# Framework for Systems-Oriented Evaluation



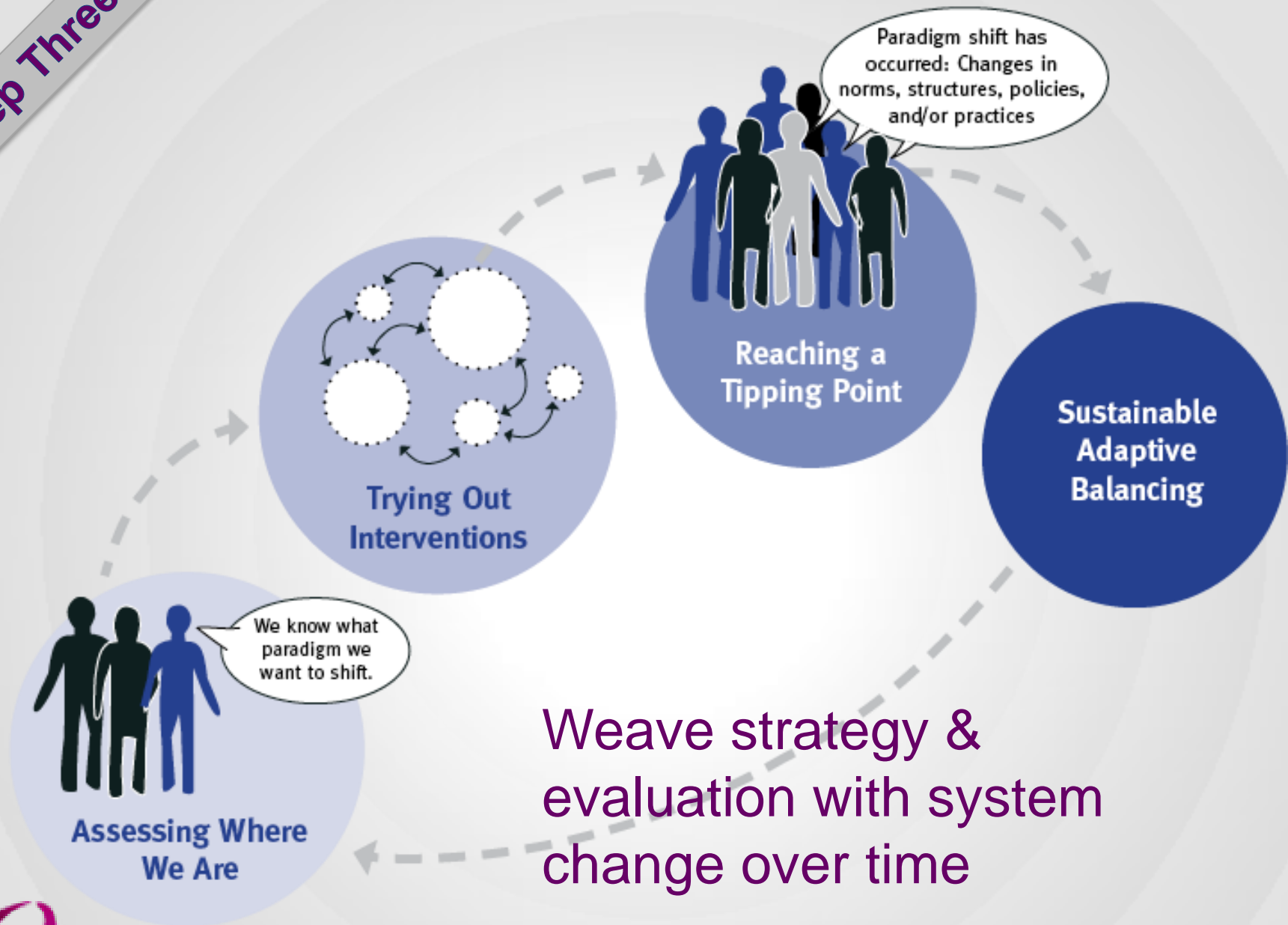
# Developing an Evaluation Framework

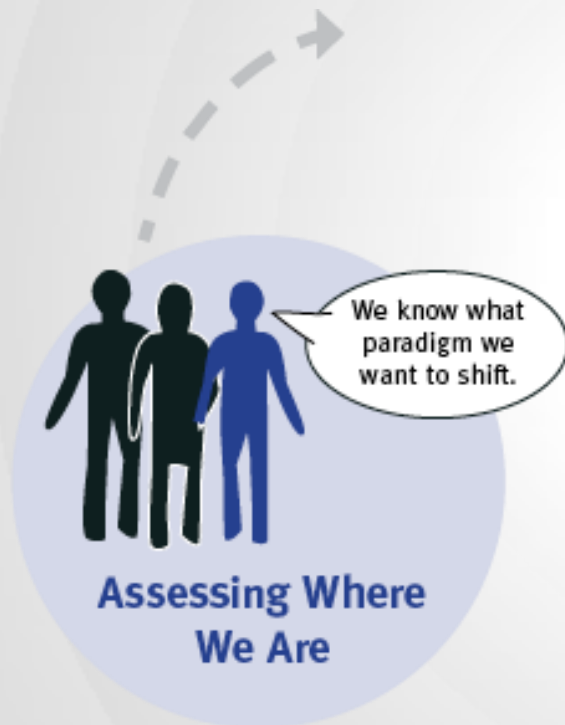
Step 1. Articulate  
Fundamental System Change  
Using Existing Evidence

Step 2. Identify Points of  
Systemic Influence

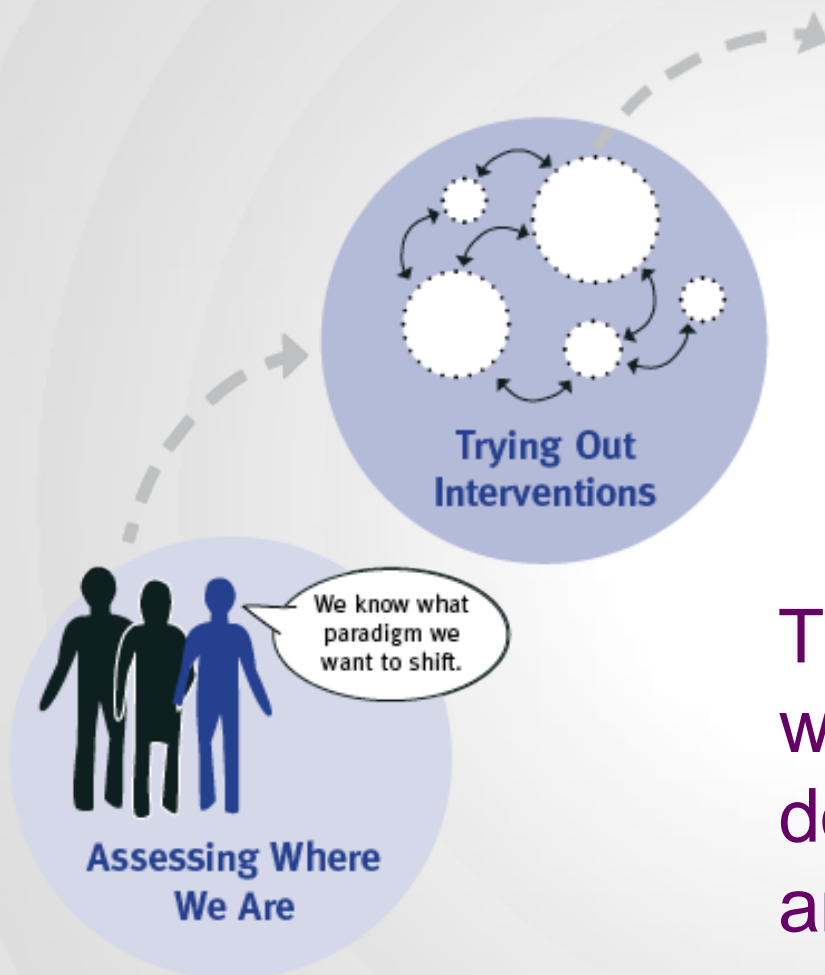
Step 3. Weave Strategy and  
Evaluation with System  
Change

## Step Three

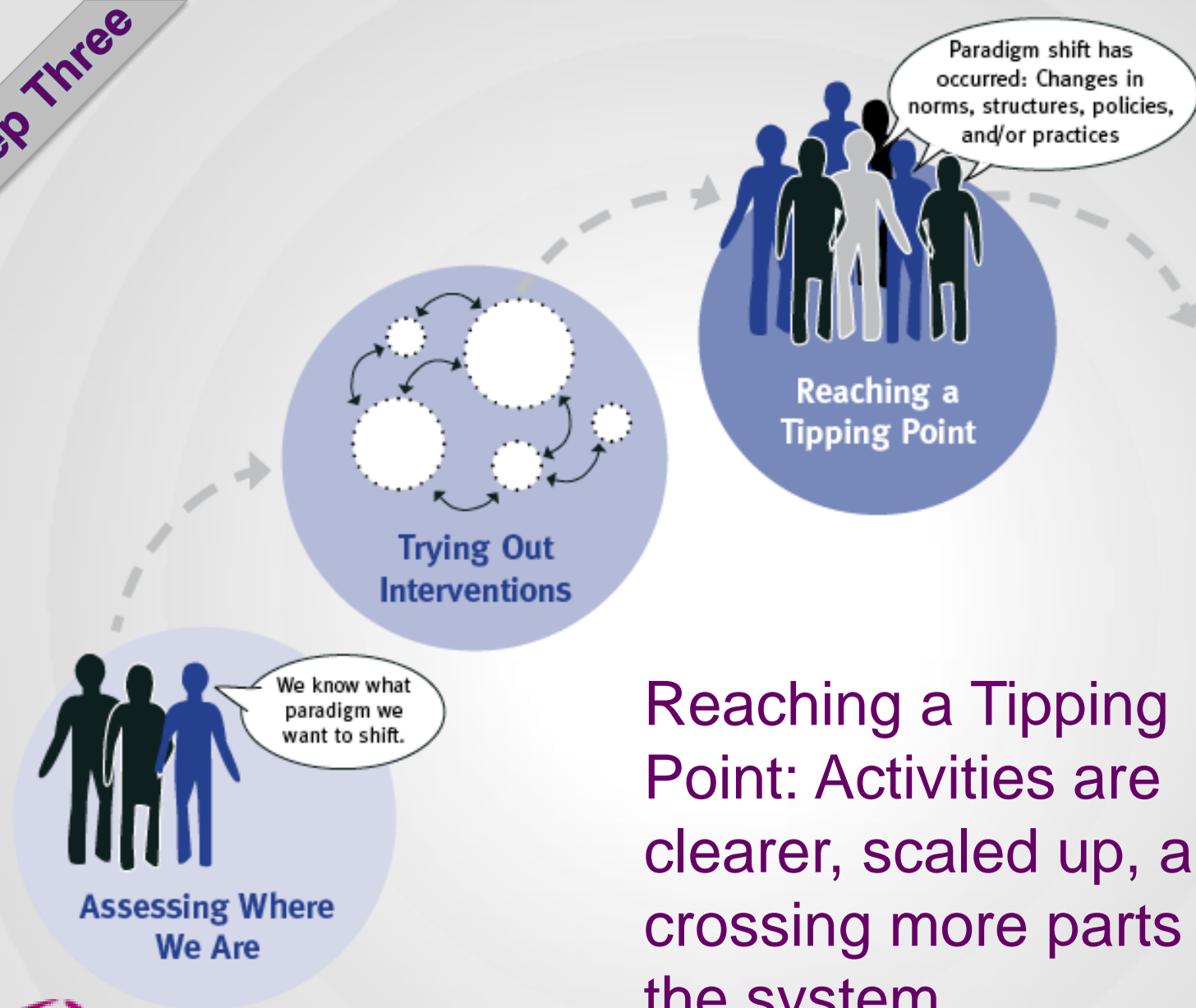




## Assessing Where We Are in relation to our vision

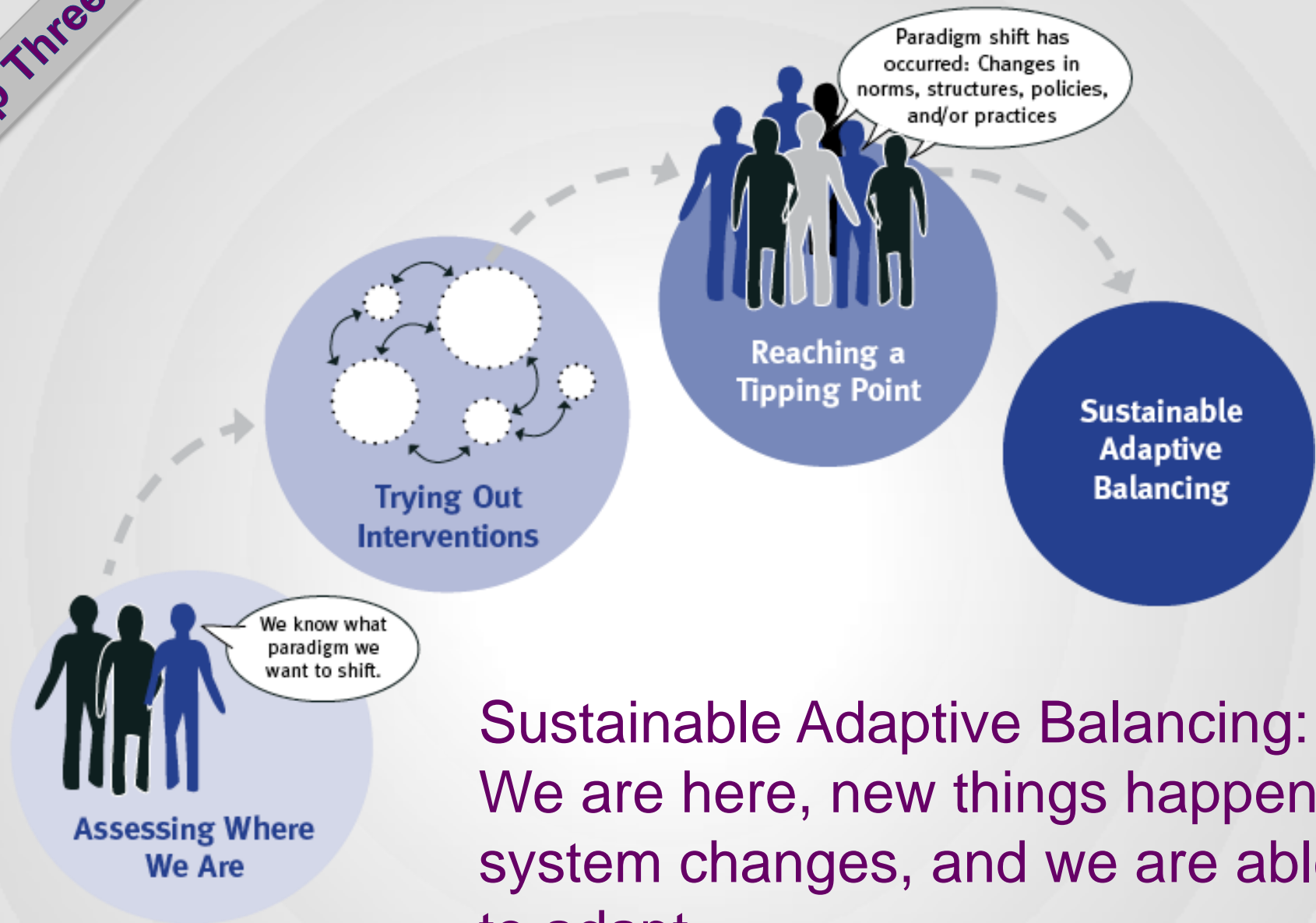


Trying Out Interventions  
within & across system  
domains, dimensions,  
and across time



Reaching a Tipping Point: Activities are clearer, scaled up, and crossing more parts of the system

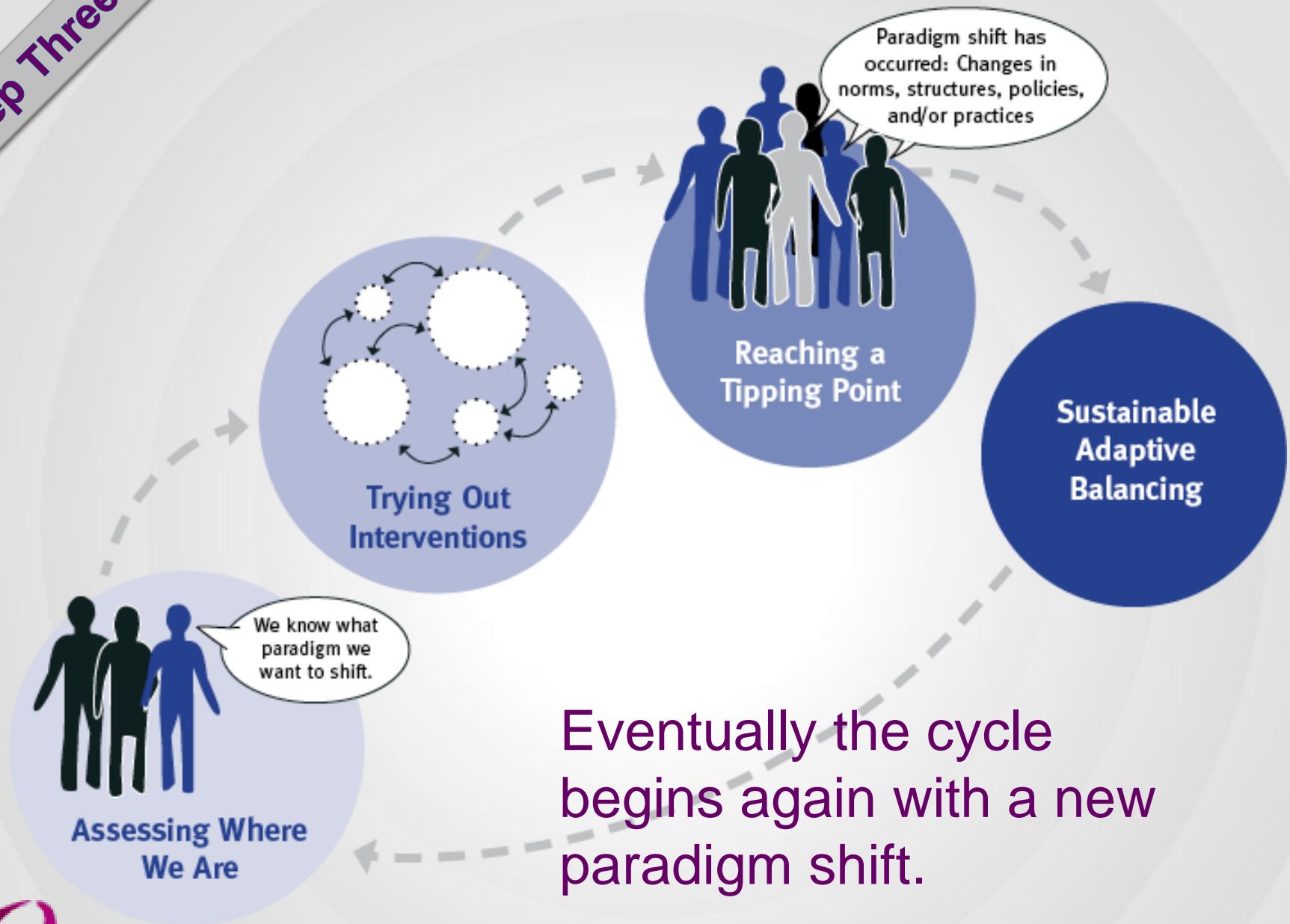
## Step Three



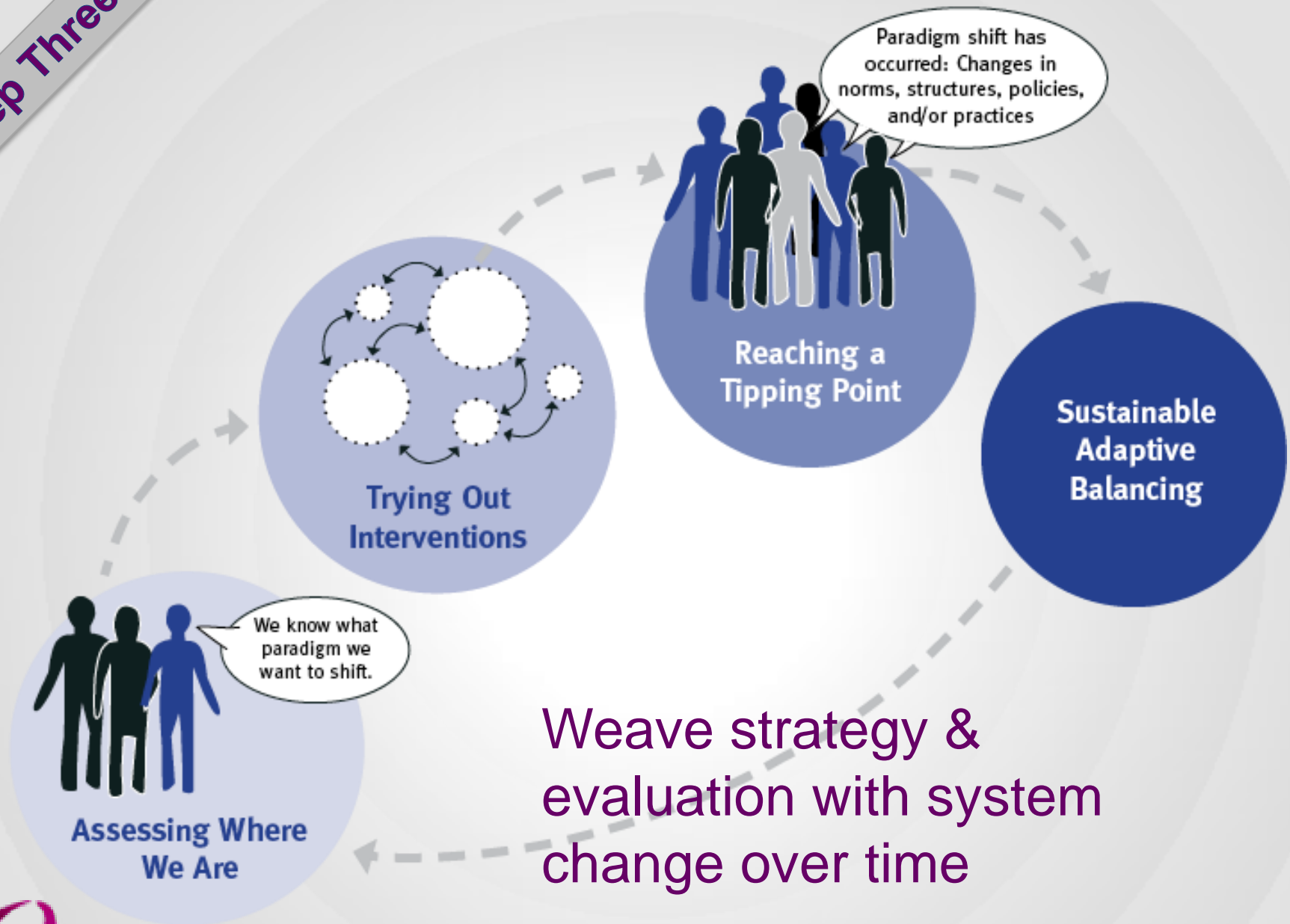
**Sustainable Adaptive Balancing:**  
We are here, new things happen,  
system changes, and we are able  
to adapt



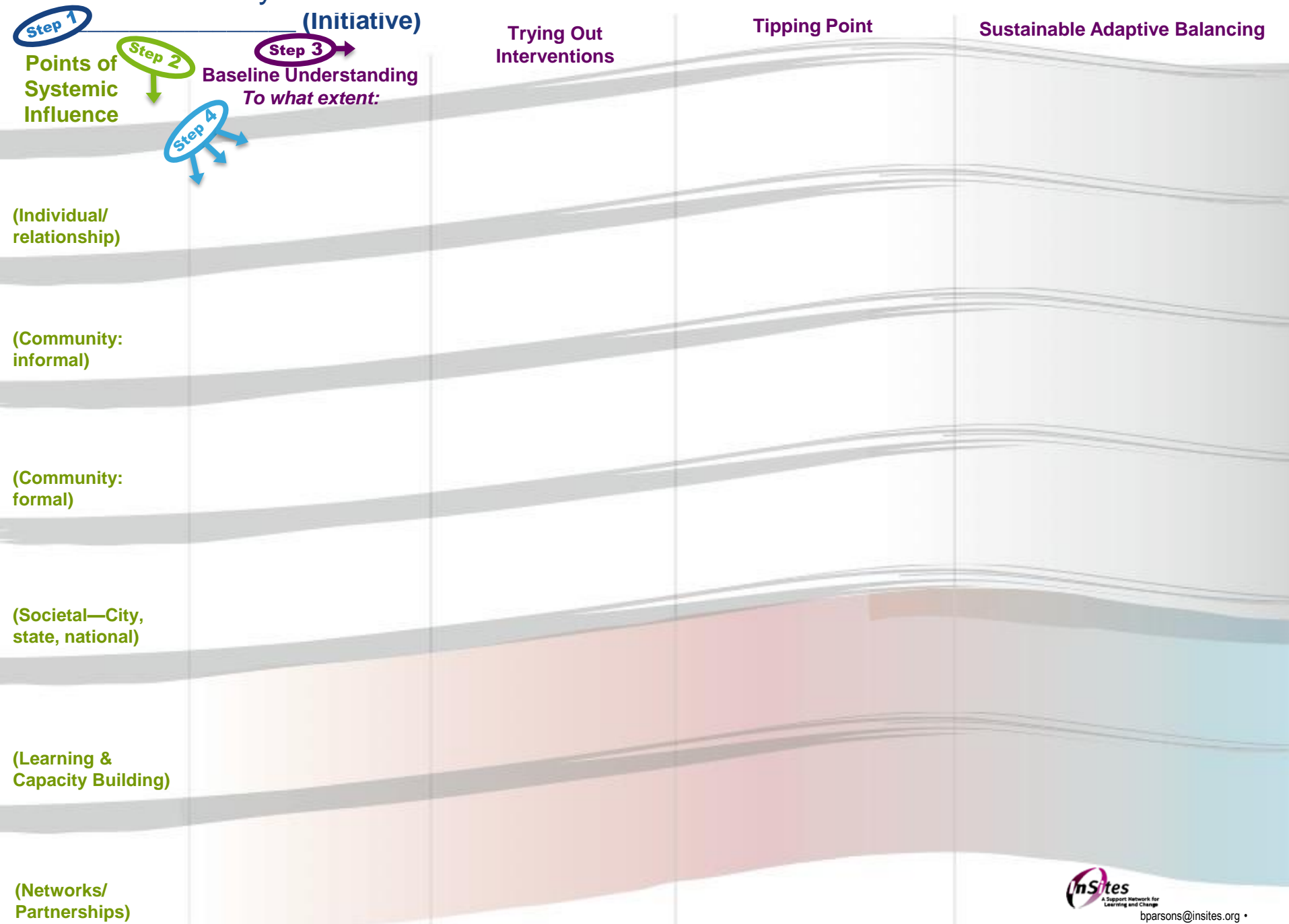
## Step Three



## Step Three



# Framework for Systems-Oriented Evaluation



# Developing an Evaluation Framework

**Step 1.** Articulate  
Fundamental System Change  
Using Existing Evidence

**Step 2.** Identify Points of  
Systemic Influence

**Step 3.** Weave Strategy and  
Evaluation with System  
Change

**Step 4.** Identify Indicators of  
System Benefit

# Framework for Systems-Oriented Evaluation

## Step 1 Strengthening Families Initiative

**Points of Systemic Influence**

**Step 2**

**Step 3**

**Step 4**

**Caregiver-Child-Family**

**Baseline Understanding**

*To what extent:*

Are families aware of and practicing protective factors? Do parents use both organized and adaptive dynamics?

**Neighborhood/Community**

Are neighborhoods and their leaders building social cohesion around protective factors? Do they encourage adaptive and organized dynamics?

**Organizations, Providers (Norms, infrastructures, policy)**

Are organizations/services designed to support protective factors framework? Do providers encourage adaptive & organized dynamics to support building protective factors?

**Societal Actors (State & national) (Norms, policies, infrastructures)**

Are norms, infrastructures, policies based on protective factors/framework principles? Are policies attentive to both organized and adaptive dynamics?

**Stakeholder Learning & Capacity Building**

Do learning activities address protective factors and model both adaptive and organized dynamics?

**Networks/Partnerships**

Are networks/partnerships designed to encourage protective factors? Do networks/partnerships leverage adaptive and organized dynamics?

## Trying Out Interventions

Families test use of protective factors and determine changes in relationships and boundaries in daily life. Families learn to self-assess use of protective factors.

Neighborhoods/communities pilot new ways of functioning that are grounded in protective factors and social cohesion.

Organizations/providers pilot new ways of operating that emphasize protective factors framework. They determine cost implications.

Norms, infrastructures, policies targeted for change with engagement of multiple voices, perspectives, and valuing of protective factors.

Learning activities redesigned and tested with attention to protective factors and use of interactive, peer-to-peer learning and learning from families.

Networks, partnerships test change in norms, infrastructure, and policies among their members.

## Tipping Point

Enough families are habitually using and building protective factors that family norms are shifting in support of protective factors framework for living. Benefits being realized.

Neighborhoods & leaders commit to use and support protective factors. They leverage organized and adaptive dynamics. Desired social cohesion being achieved/supported.

Organizations/providers commit to redesigned norms/structures/policies that support protective factors framework & principles. They leverage organized and adaptive dynamics. Desired benefits being realized/supported.

Norms, infrastructures, policies overall encourage presence of protective factors. Leverage both organized and adaptive dynamics. Caregiver, child, family outcomes supported.

Communities of practice grounded in peer-to-peer learning and application are common; include reflection on use of protective and risk factor attention in different contexts.

Key partners, networkers have multiple interconnections that encourage attention to protective factors in a micro & macro level. Attention to protective factors framework is fundamental to connections.

## Sustainable Adaptive Balancing

Caregivers are connected with other caregivers and family members who are skilled at using and building protective factors. Family norms support protective factors. (Evidence of well-being of families and levels of child maltreatment regularly monitored.)

Neighborhoods & leaders adjust to social conditions in community and emphasis on supporting protective factors. They consider and reflect on their ways of functioning. (Evidence monitored.)

Organizations/providers use caregiver, child, family outcome and other data to adjust to social conditions in community with emphasis on presence of protective factors. Organizations/providers leverage both adaptive and organized dynamics.

Societal leaders balance attention to risk and protective factors tailored to micro-contexts. They address norms, infrastructures, policies and dynamics over time based on monitoring data and related new knowledge.

New knowledge development, dissemination, and integration woven into practice with learning activities and communities of practice used to shore up challenging areas. (Stakeholder knowledge and practice regularly assessed.)

Partners, networkers use data feedback to strategically shift connections to respond to contextual changes to ensure primary attention to protective factors. Shifts are based on systems thinking.

# Process for Developing an Evaluation Framework

Who:

Leadership Team

Evaluator

Stakeholders

When:

Near beginning

Review, revise, adapt



# Framework for Systems-Oriented Evaluation

## **Step 1** Strengthening Families Initiative

Points  
of Systemic  
Influence

**Step 2**

**Step 3** →  
**Baseline Understanding**  
*To what extent:*

**Trying Out  
Interventions**

**Caregiver-  
Child-Family**

**Step 4**

Are families aware of and practicing protective factors? Do parents use both organized and adaptive dynamics?

Families test use of protective factors and determine changes in relationships and boundaries in daily life. Families learn to self-assess use of protective factors.

# Evaluation

## **Tipping Point**

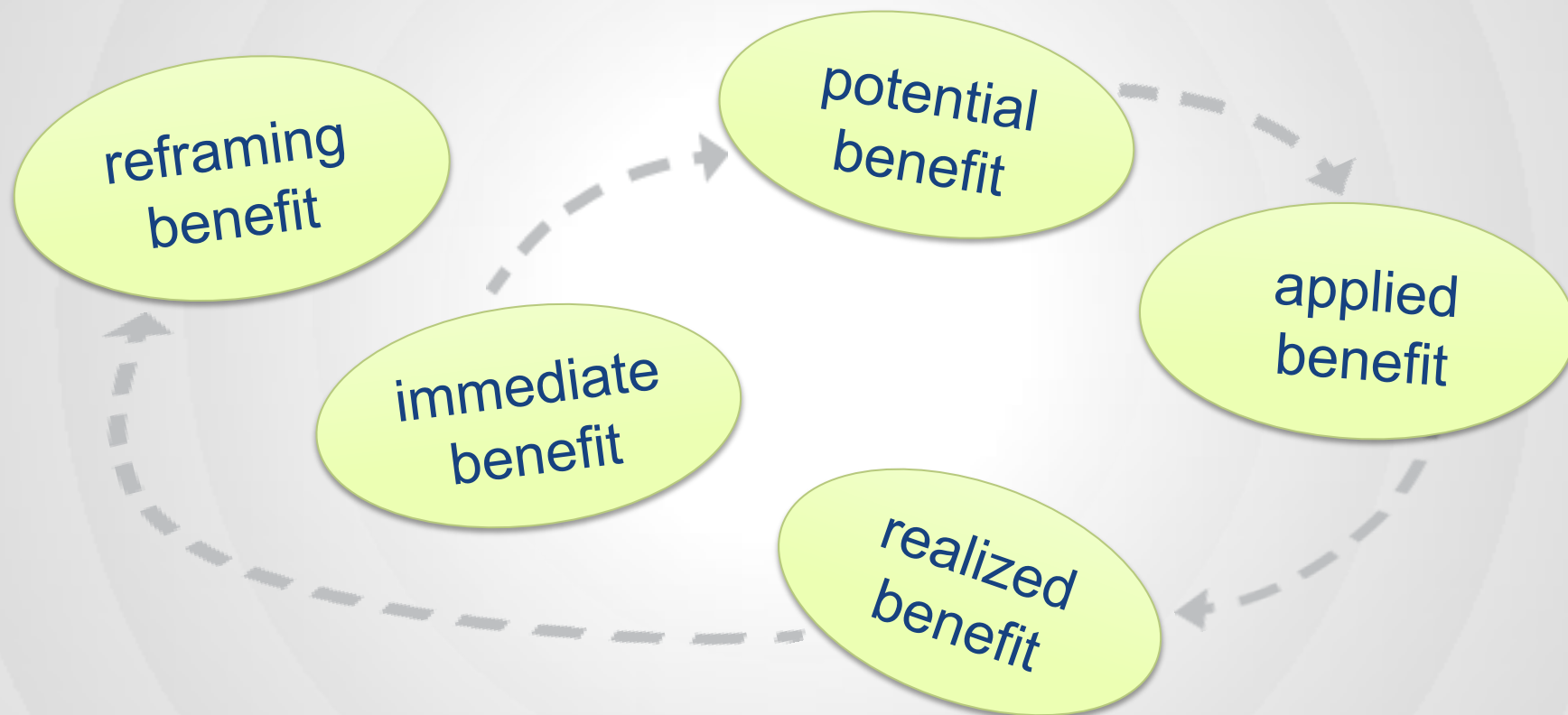
Enough families are habitually using and building protective factors that family norms are shifting in support of protective factors framework for living. Benefits being realized.

## **Sustainable Adaptive Balancing**

Caregivers are connected with other caregivers and family members who are skilled at using and building protective factors. Family norms support protective factors. (Evidence of well-being of families and levels of child maltreatment regularly monitored.)



# Identify Indicators of System Benefit

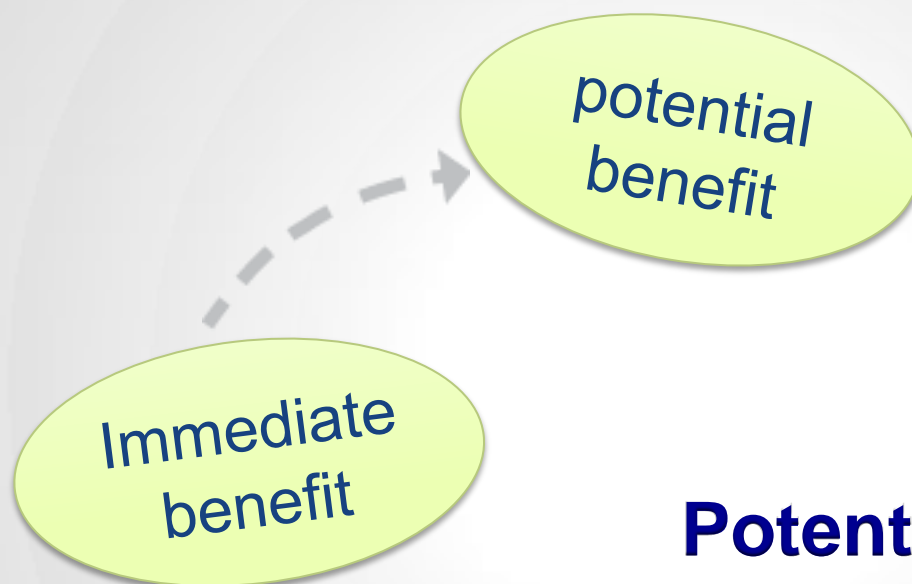


# Identify Indicators of System Benefit

immediate  
benefit

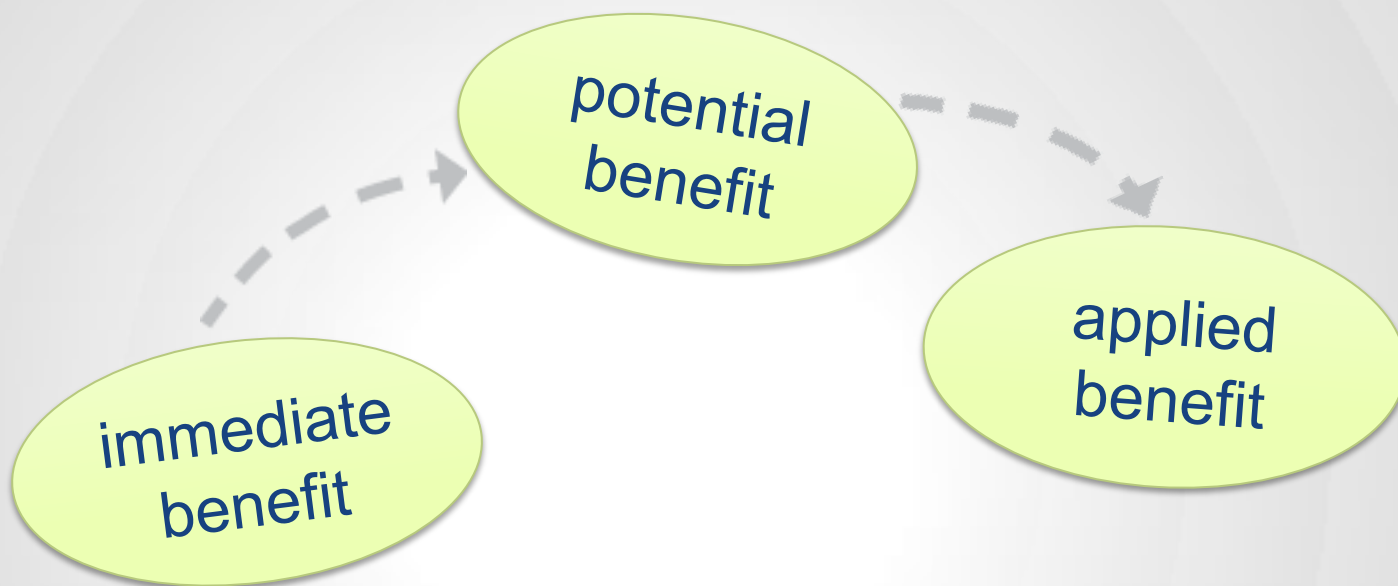
**Immediate:**  
the benefit of the  
activities and interactions  
in the community of  
practice

# Identify Indicators of System Benefit



**Potential:**  
knowledge capital that is  
produced but not  
necessarily used in the  
immediate situation

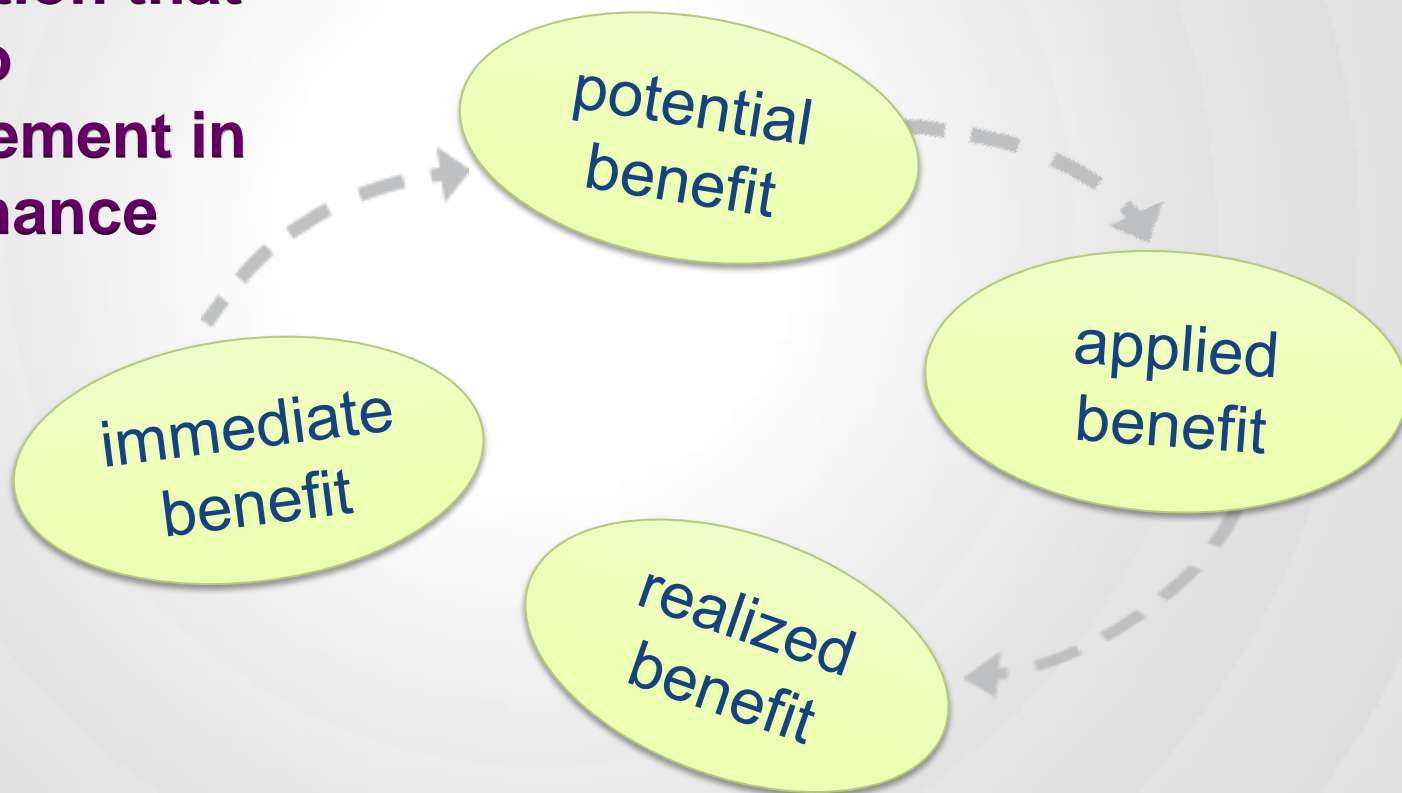
# Identify Indicators of System Benefit



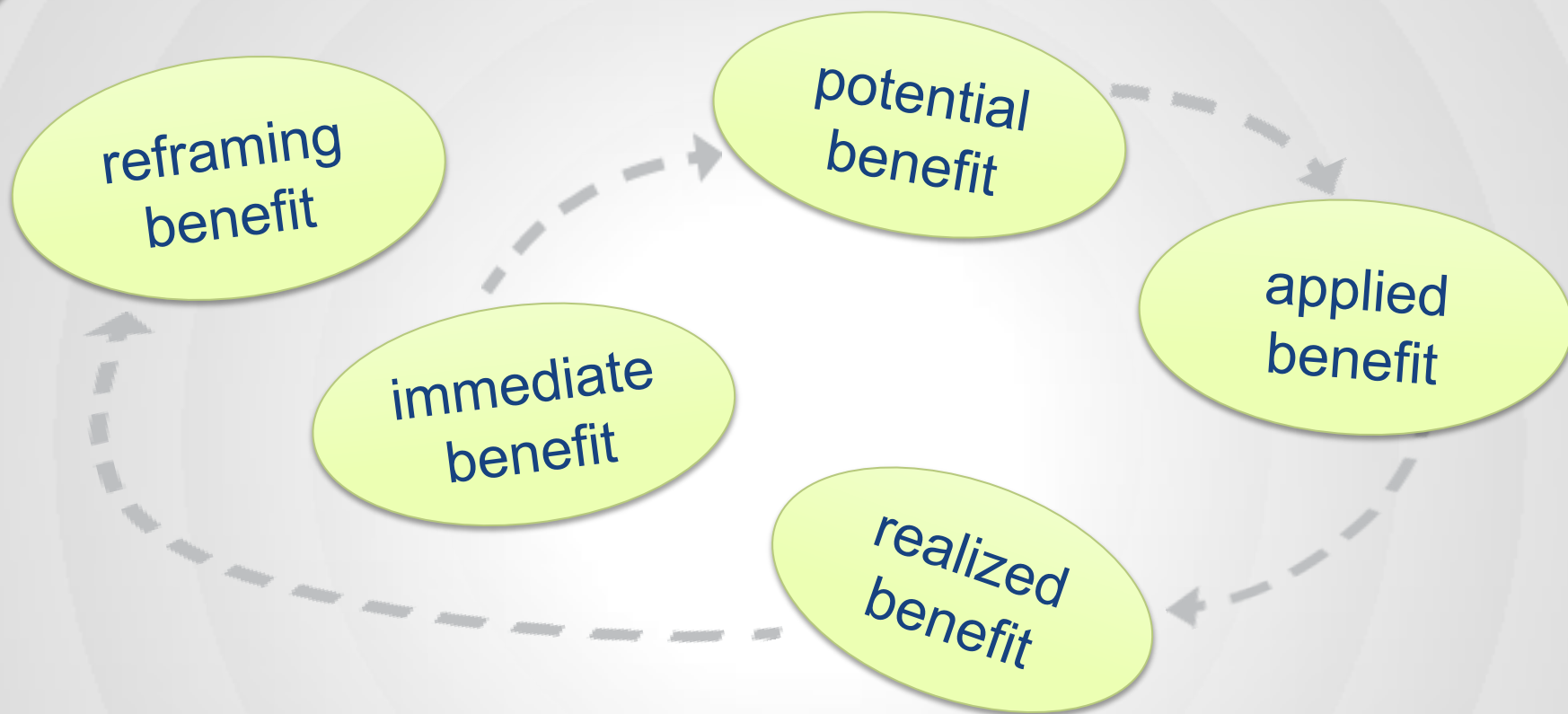
**Applied:**  
adapting and applying  
knowledge in different  
contexts

## Identify Indicators of System Benefit

**Realized:**  
application that  
leads to  
improvement in  
performance



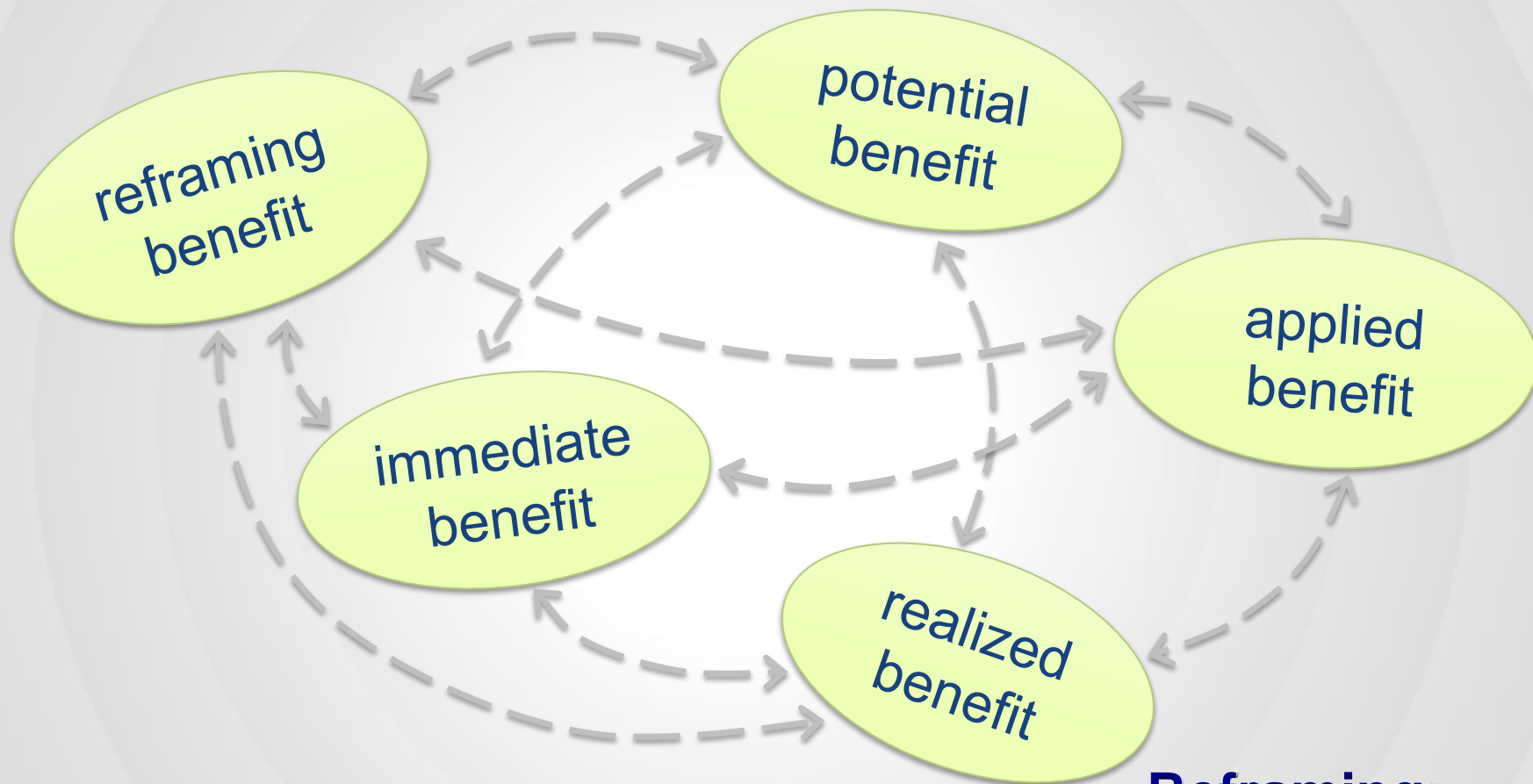
# Identify Indicators of System Benefit



**Reframing:**  
reconsideration/redefining of  
perspectives, processes and/or structures



# Identify Indicators of System Benefit



**Reframing:**  
reconsideration/redefining of  
perspectives, processes and/or structures

# Framework for Systems-Oriented Evaluation

## Step 1 Strengthening Families Initiative

**Points of Systemic Influence**

**Step 2**

**Baseline Understanding**

**To what extent:**

**Caregiver-Child-Family**

Are families aware of and practicing protective factors? Do parents use both organized and adaptive dynamics?

**Neighborhood/Community**

Are neighborhoods and their leaders building social cohesion around protective factors? Do they encourage adaptive and organized dynamics?

**Organizations, Providers (Norms, infrastructures, policy)**

Are organizations/services designed to support protective factors framework? Do providers encourage adaptive & organized dynamics to support building protective factors?

**Societal Actors (State & national) (Norms, policies, infrastructures)**

Are norms, infrastructures, policies based on protective factors/framework principles? Are policies attentive to both organized and adaptive dynamics?

**Stakeholder Learning & Capacity Building**

Do learning activities address protective factors and model both adaptive and organized dynamics?

**Networks/Partnerships**

Are networks/partnerships designed to encourage protective factors? Do networks/partnerships leverage adaptive and organized dynamics?

## Trying Out Interventions

Families test use of protective factors and determine changes in relationships and boundaries in daily life. Families learn to self-assess use of protective factors.

Neighborhoods/communities pilot new ways of functioning that are grounded in protective factors and social cohesion.

Organizations/providers pilot new ways of operating that emphasize protective factors framework. They determine cost implications.

Norms, infrastructures, policies targeted for change with engagement of multiple voices, perspectives, and valuing of protective factors.

Learning activities redesigned and tested with attention to protective factors and use of interactive, peer-to-peer learning and learning from families.

Networks, partnerships test change in norms, infrastructure, and policies among their members.

## Tipping Point

Enough families are habitually using and building protective factors that family norms are shifting in support of protective factors framework for living. Benefits being realized.

Neighborhoods & leaders commit to use and support protective factors. They leverage organized and adaptive dynamics. Desired social cohesion being achieved/supported.

Organizations/providers commit to redesigned norms/structures/policies that support protective factors framework & principles. They leverage organized and adaptive dynamics. Desired benefits being realized/supported.

Norms, infrastructures, policies overall encourage presence of protective factors. Leverage both organized and adaptive dynamics. Caregiver, child, family outcomes supported.

Communities of practice grounded in peer-to-peer learning and application are common; include reflection on use of protective and risk factor attention in different contexts.

Key partners, networkers have multiple interconnections that encourage attention to protective factors in a micro & macro level. Attention to protective factors framework is fundamental to connections.

## Sustainable Adaptive Balancing

Caregivers are connected with other caregivers and family members who are skilled at using and building protective factors. Family norms support protective factors. (Evidence of well-being of families and levels of child maltreatment regularly monitored.)

Neighborhoods & leaders adjust to social conditions in community and emphasis on supporting protective factors. They consider and reflect on their ways of functioning. (Evidence monitored.)

Organizations/providers use caregiver, child, family outcome and other data to adjust to social conditions in community with emphasis on presence of protective factors. Organizations/providers leverage both adaptive and organized dynamics.

Societal leaders balance attention to risk and protective factors tailored to micro-contexts. They address norms, infrastructures, policies and dynamics over time based on monitoring data and related new knowledge.

New knowledge development, dissemination, and integration woven into practice with learning activities and communities of practice used to shore up challenging areas. (Stakeholder knowledge and practice regularly assessed.)

Partners, networkers use data feedback to strategically shift connections to respond to contextual changes to ensure primary attention to protective factors. Shifts are based on systems thinking.

# Developing an Evaluation Framework

**Step 1.** Articulate Fundamental System Change Using Existing Evidence

**Step 2.** Identify Points of Systemic Influence

**Step 3.** Weave Strategy and Evaluation with System Change

**Step 4.** Identify Indicators of System Benefit

# Value of the Evaluation Framework

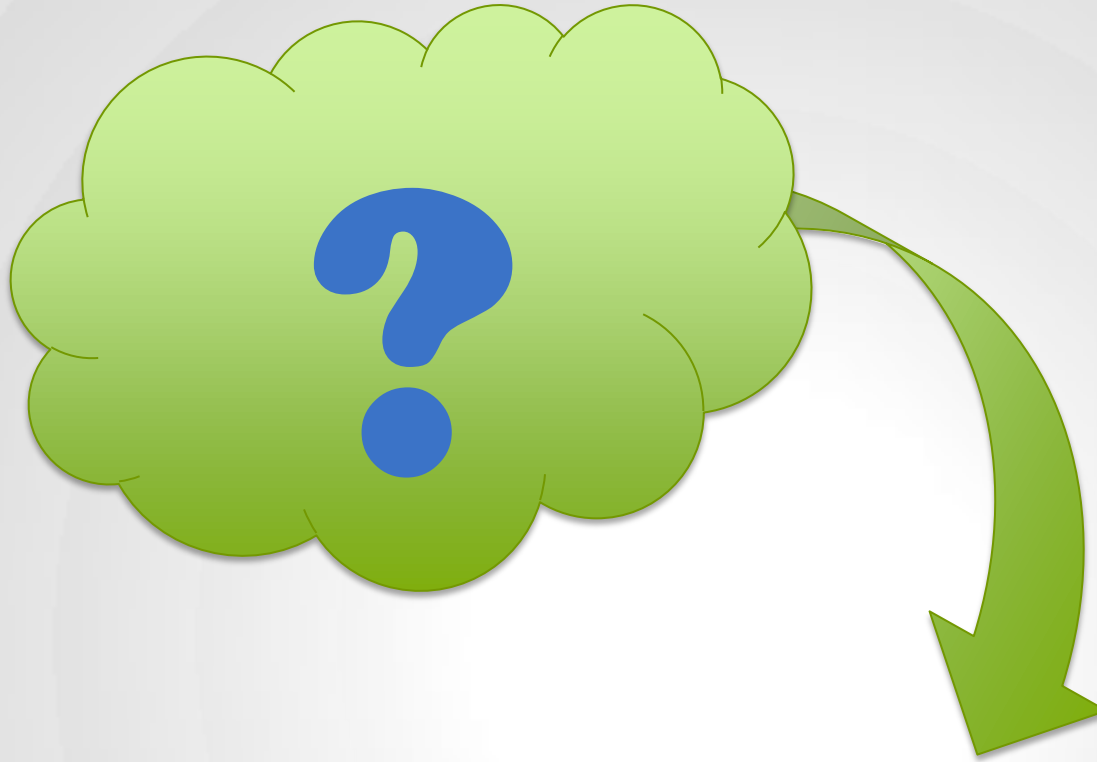
Link strategy and  
evaluation

See the big picture

Map actions among  
partners

Be transparent

Map progress  
over time



# Questions & Answers

**Let's  
Connect!**

**Beverly Parsons**

**[bparsons@insites.org](mailto:bparsons@insites.org)**

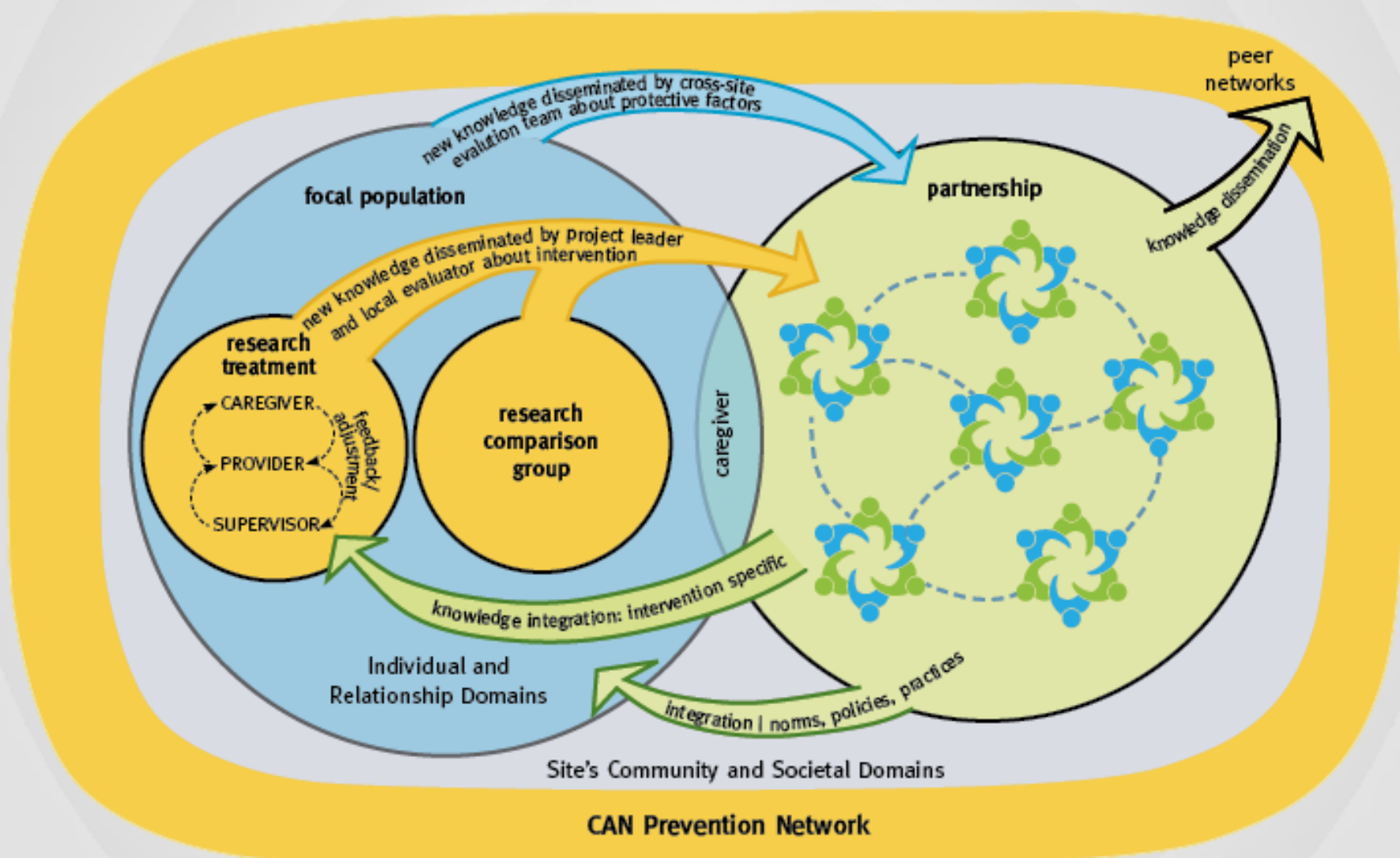
**[www.insites.org](http://www.insites.org)**





# Site Level

Patterns of knowledge development, dissemination, and integration



## QIC-EC Level

Patterns of knowledge development, dissemination and integration

