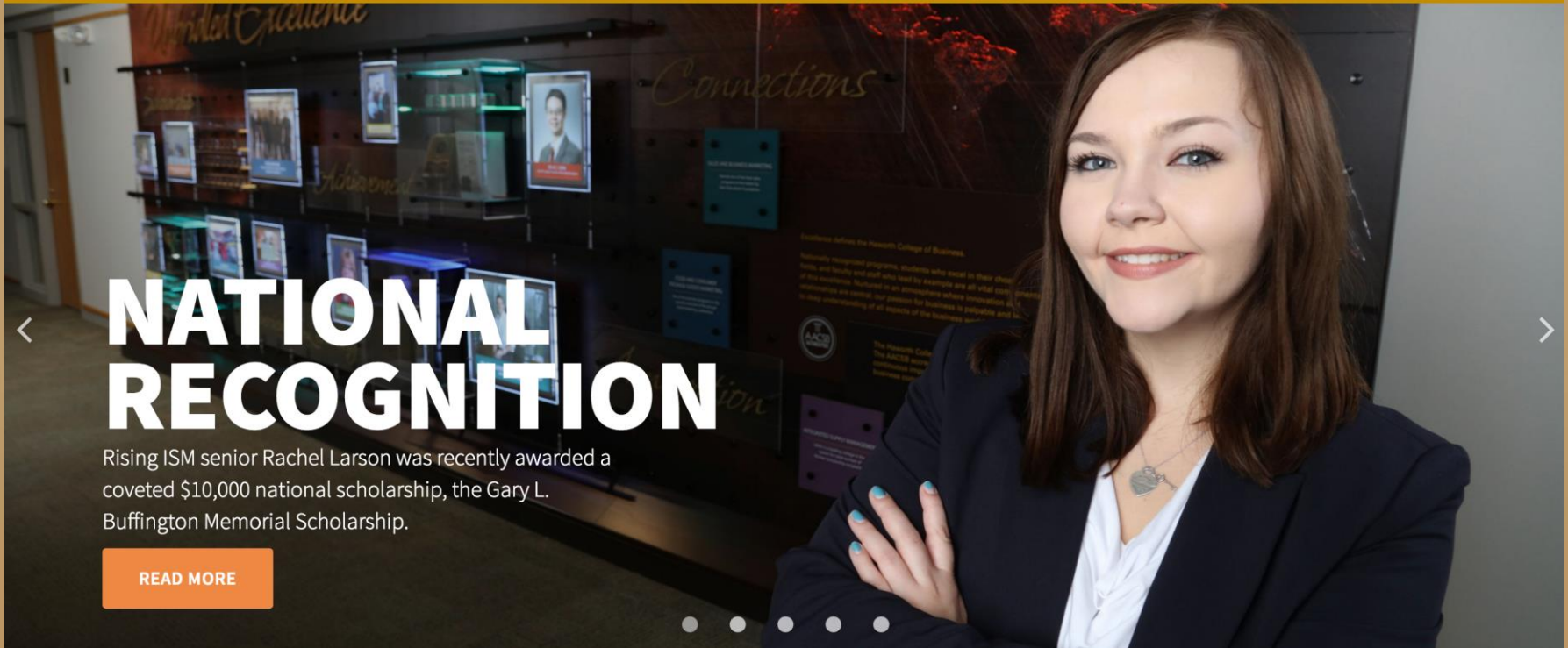


Haworth

College of Business

Haworth College of Business



NATIONAL RECOGNITION

Rising ISM senior Rachel Larson was recently awarded a coveted \$10,000 national scholarship, the Gary L. Buffington Memorial Scholarship.

[READ MORE](#)

Center for Integrated Supply Management



Haworth

College of Business

New Product Launch



*Solving Supply Chain Challenges **Together***

Center for Integrated Supply Management



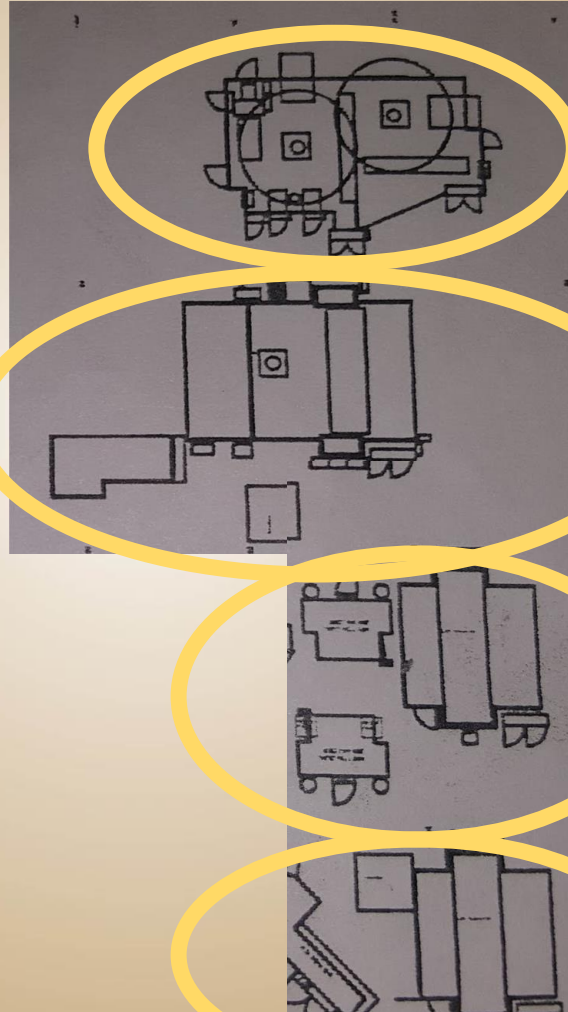
Bronco Force

- Student led consulting consortium
- MGMT 3810: Improving Supply Systems
- Six Sigma Green Belt
- Corporate Champions



Initial State

- 4 Cells
- 16 Operators
- 3 Shifts
- 3 Repackers
- 146 different parts
- 7 versions



C151

C131

C130

C150

SIPOC

Suppliers

Pridgeon & Clay

Michigan Rod Products

CFC Wireforms

Heckethorn
Manufacturing

BAND IT

Toefco

10+ MORE

1. Order Bulk
2.) ack

Inputs

146+ different parts

3.) C150 > C130
Rep > C151

Process

4.) Send out for Painting

Outputs

7 Versions

5.) C 131

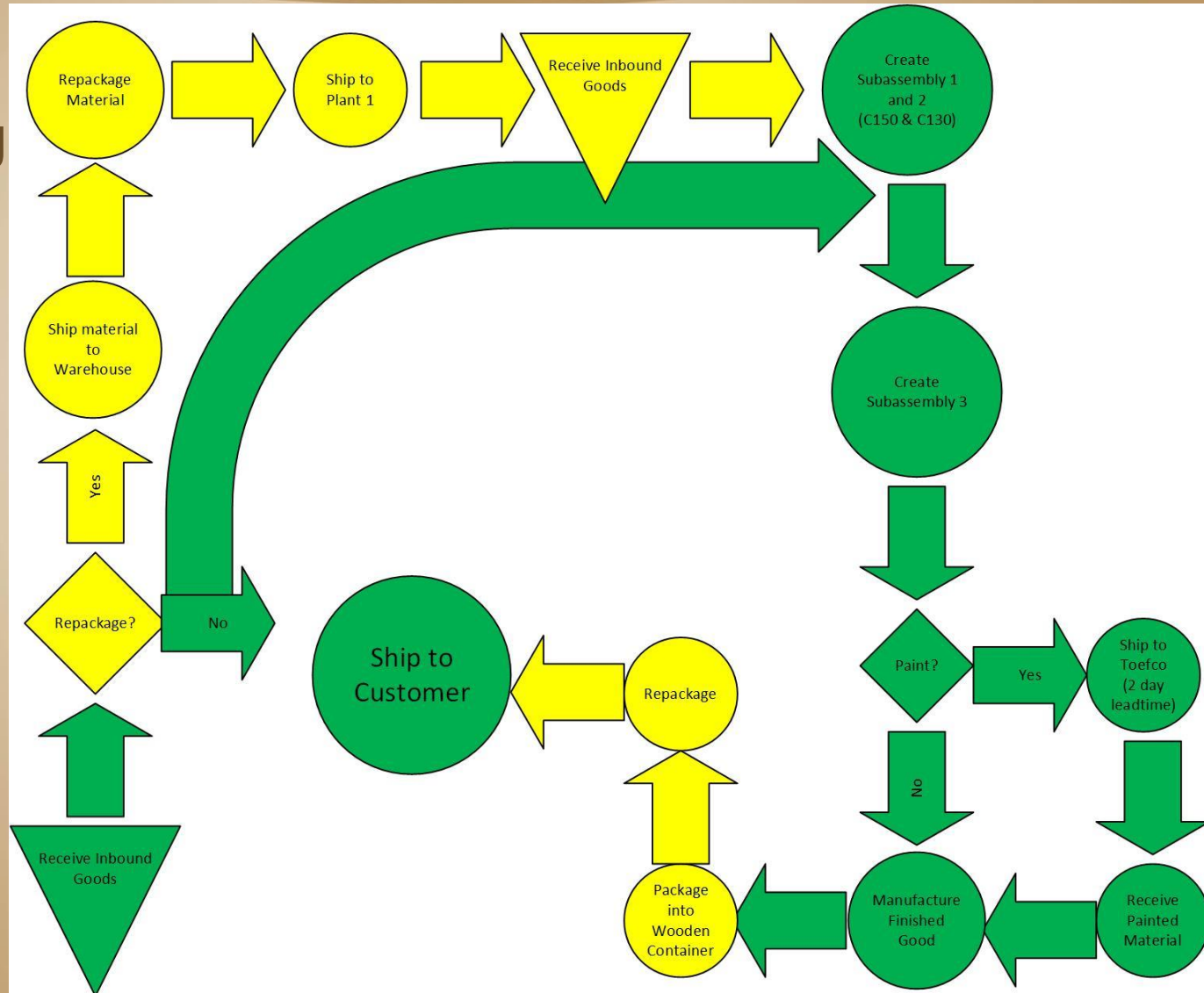
Customers

Fortune 500
Customer

6.) Repack 7.) Ship

Operational Flow Chart

- About 50% Repackaging



Communication Flow Chart

Corporate

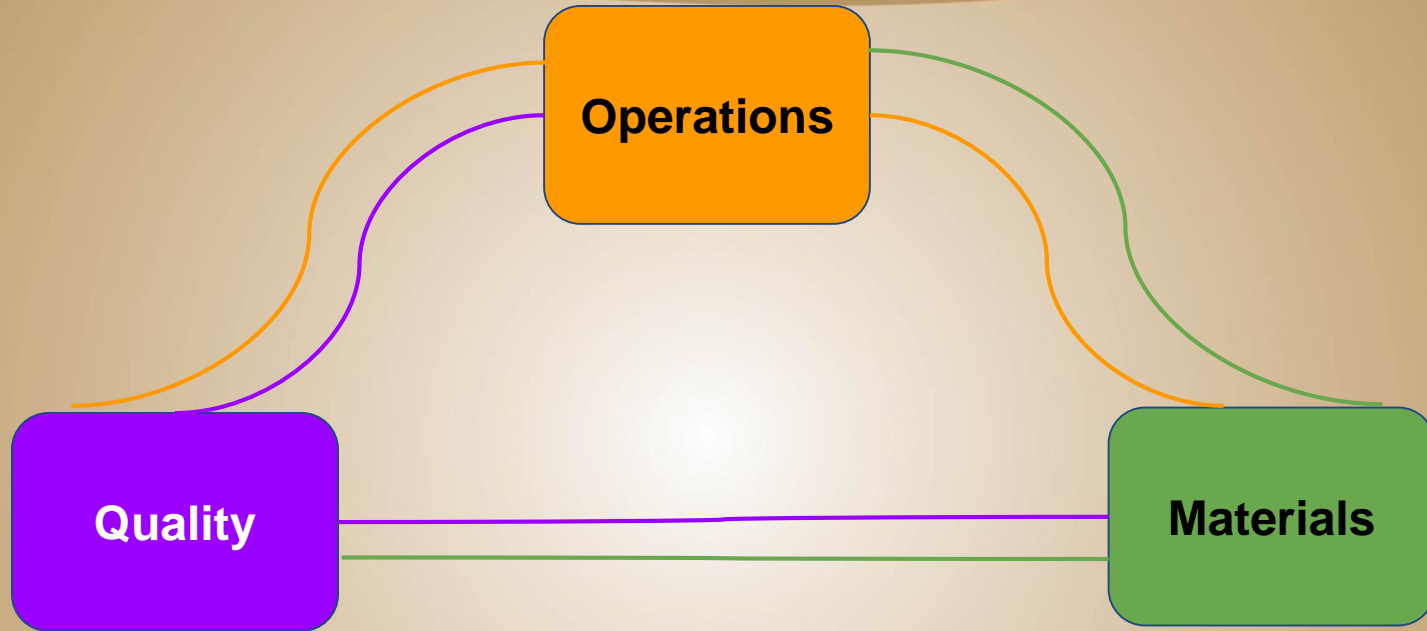
Plant Manager

Materials

Quality

Operations

Communication Flow Chart



The Blame Game

The Lucifer Effect

- Dispositional:
 - Individual



- Situational:
 - External Factors



- Systemic:
 - The Organization



Takeaways



Leadership

Team work

Communication