

[Expressions in Paper and Clay](#)

Art exhibition, Kalamazoo Institute of Arts

January 28 - May 14

Expressions in Paper and Clay will show the vibrant, engaging, and innovative traditions of Japanese printmaking and ceramics spanning the last fifty years. *Expressions in Paper and Clay* juxtaposes contemporary prints by Japanese artists on loan from Joy and Timothy Light with a newly promised gift of contemporary ceramics by Japanese artists from the Carol and Jeffrey Horvitz Collection. This exhibition explores how abstract and realistic concepts come to fruition using these disparate media.



[Takeout Tuesdays: Guardian of Flame with docent Neaera Baer](#)

Tuesday, March 7, 3 pm (noon pst)

Free Virtual Event through the Asian Museum of Art



[Artistry and Innovation in Japanese Ceramics and Printmaking](#)

Kalamazoo Institute of Arts

Tuesday, March 14, noon - 1 pm

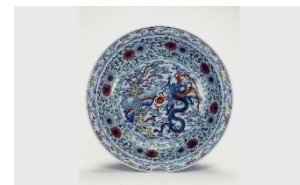
Free online talk

Explore *Expressions in Paper and Clay* with faculty from the Kirk Newman Art School. Julie Devers (Chair of Ceramics) and Deborah Mattson (Chair of Printmaking) will discuss works from the exhibition, which highlights the vibrant, engaging, and innovative traditions of Japanese printmaking and ceramics spanning the past fifty years. This exhibition continues the Kalamazoo Institute of Arts' long-standing commitment to presenting art and techniques that intersect with disciplines taught in the Kirk Newman Art School, while illuminating Japanese innovations in art for the community.

[Takeout Tuesdays: Our Phoenixes at the Museum with docent Peggy Mathers](#)

Tuesday, March 14, 3 pm (noon pst)

Free Virtual Event through the Asian Museum of Art



[Takeout Tuesdays: The Art of Islam is Written with docent Steve Zilles](#)

Tuesday, March 21, 3 pm (noon pst)

Free Virtual Event through the Asian Museum of Art