

Knowles Notes

January 9, 2020

Hello, and welcome to a new decade! I hope your spring semester is off to a great start already. Here is what has been happening in the Office of the Provost:

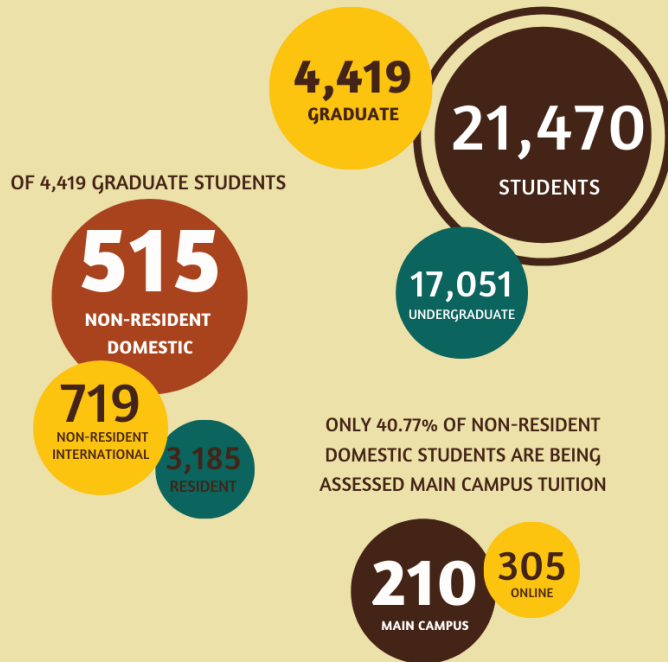
- The Provost's Council met on December 17. Two colleagues from Arts and Sciences, Kathleen Drzewiecki and Dorilee Crown, joined the meeting present an office administrative manual. The manual is available online through SharePoint and provides a detailed, searchable repository of policies and procedures regularly carried out by administrative assistants. For access to the manual, please email [Dorilee](#) or [Kathleen](#).
 - The following updates were also shared during the December 17 meeting:
 - Residency Policy Impact. An infographic (below) was created to show the minimal impact this policy has on WMU students. The policy was recently updated and approved by the Board of Trustees (at their November meeting), and some graduate students had voiced concerns about the change. The infographic was designed to show facts and dispel rumors that this change would negatively impact a significant number of graduate students.
 - Financial Aid Optimization. With the help of partners at EAB, the Office of Financial Aid now has a clear strategy for awarding aid to our students. In the past, the strategy has not been clearly defined nor abided by; implementing an optimization plan will allow us to award aid more effectively and will guide our decision-making for the foreseeable future.
- A message was shared with Academic Affairs administrators to notify them of plans for interim leadership of the College of Education and Human Development while Dean Ming Li takes a temporary administrative leave for the spring 2020 semester. Provost Bott has appointed Dr. Marcia Feters and Dr. Andrea Beach to serve as Acting Co-Deans.
- The Provost's Office team participated in some holiday festivities, including a "third floor" ugly sweater luncheon hosted by the President's Office.



We hope you all enjoyed the holidays and are back feeling refreshed and energized for a terrific 2020! Thanks for all you do.

RESIDENCY POLICY IMPACT

FALL 2019 ENROLLMENT



64.76% OF NON-RESIDENT
GRADUATE STUDENTS ARE ON
ASSISTANTSHIP (136 OUT OF 210)

< 2%

74 OF 4,419 GRADUATE
STUDENTS ARE IMPACTED BY
THE CHANGE (1.67%)

ONLY 23% CHOSE
TO PURSUE A
CHANGE OF
RESIDENCY
(17 STUDENTS)

NO MORE THAN

17

TOTAL STUDENTS COULD BE IMPACTED