

# ADAPTED PHYSICAL EDUCATION

Master of Arts

[wmich.edu/humanperformance/academics](http://wmich.edu/humanperformance/academics)



## ABOUT THE PROGRAM

This fully online program is designed to prepare physical education or special education teachers to provide quality adapted physical education for school children with disabilities. Graduates will gain knowledge, skills and experience in teaching students with disabilities fundamental motor skills and patterns, physical and motor fitness, as well as skills in aquatic, dance, individual, group games and sports, leisure and recreational skills.

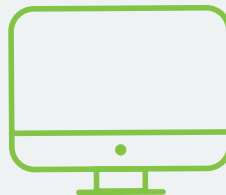


**The professors are always available when you need them and will go the extra mile to make sure their students have what they need to be successful.**

■ Lindsey Tocco, alumna



The WMU teacher education unit is **accredited by the Council for the Accreditation of Educator Preparation (CAEP)**.



The **program is entirely online**, and as a WMU online student you are part of a community of professionals and learners from across the country.

269-387-2710 | [cehd-outreach@wmich.edu](mailto:cehd-outreach@wmich.edu) | [wmich.edu/grad/apply](http://wmich.edu/grad/apply)

[f](#) [@](#) [t](#) [v](#) | @WMUCEHD



**WESTERN MICHIGAN UNIVERSITY**  
College of Education  
and Human Development

# ADAPTED PHYSICAL EDUCATION

Master of Arts

[wmich.edu/humanperformance/academics](http://wmich.edu/humanperformance/academics)

## PROGRAM OF STUDY

### Core (6 credits):

HPHE 6900 Research Procedures in HPHE  
HPHE 6920 Analytical Techniques in HPHE

### Area of Specialization (18 credits):

#### Physical Education majors:

HPHE 6210 Physical Activity for Exceptional Children  
HPHE 6220 Programming in Adapted PE  
HPHE 6250 Assessment in Adapted PE  
SPED 5300 Introduction to Special Education  
SPED 6380 Application of Behavior Analysis in SPED  
SPED 6610 Collaboration and Consultation in SPED

#### Special Education (SPED) majors:

HPHE 6210 Physical Activity for Exceptional Children  
HPHE 6220 Programming in Adapted PE  
HPHE 6250 Assessment in Adapted PE  
HPHE 6400 Instructional Materials in PE  
HPHE 6410 Teaching and Supervision Skills in PE  
HPHE 6450 Curriculum Development in HPHE

### Elective Options (3-6 credits):

HPHE 6420 Human Growth and Motor Development  
HPHE 6430 Physical Skill Acquisition and Motor Learning  
HPHE 6450 Curriculum Development in HPHE  
HPHE 6910 Psychological Preparation and Mental Training  
HPHE 6930 Sociology of Sport and Physical Activities

### Capstone (6-9 credits):

HPHE 7120 Professional Field Experience  
HPHE 7100 Independent Research  
or HPHE 7000 Thesis



100% of WMU  
physical education  
graduate students  
were employed  
or continuing  
education within  
three months  
of graduation.



**Dr. Jiabei Zhang**  
Program Coordinator  
jiabei.zhang@wmich.edu  
(269) 387-2949

### Additional Program Faculty

Dr. Mauro Andre, Dr. Suzan Ayers,  
Dr. Yuanlong Liu, Dr. Jongho Moon  
and Carol Weideman